

Kohler Company

A World-Class Portfolio of Leading Bathroom Brands

KALLISTA

Kallista.com

JACOB DELAFON

Jacobdelafon.fr

KOHLER

Asia-Pacific: Kohler.asia
Australia: Kohler.com.au
China: Kohler.com.cn
Hong Kong: Kohler.com.hk
Indonesia: Kohler.co.id
Japan: Kohler.jp
Korea: Kohler.co.kr
Malaysia: Kohler.my
Mongolia: Kohler.mn
New Zealand: Kohler.co.nz
Singapore: Kohler.com.sg
Taiwan: Kohler.com.tw
Thailand: Kohlerthai.com
The Philippines: Kohler.ph
Vietnam: Kohlervn.com
USA: Kohler.com

Kohler Blog

Kohler.design
Blog.kohlerboldart.com

Social Media

[Facebook.com/kohlerasiapacific](https://www.facebook.com/kohlerasiapacific)

ENGLEFIELD

New Zealand: Englefield.co.nz
Australia: Englefield.com
Thailand: Englefieldthai.com
Hong Kong: Englefield.com.hk
Indonesia: Englefield.co.id

KALLISTA

Jacob Delafon
PARIS
LÀ OÙ COMMENCE L'ÉLÉGANCE

KOHLER





Welcome to Kohler Company. Born in the USA over 143 years ago, we are a global leader in the kitchen & bathroom industry.

We are present on all continents with 50 manufacturing facilities, 30,000 staff and thousands of patents to our name. Four design centers on three continents with designers from various countries and backgrounds help us to be truly global while respecting local tastes and preferences.

Kohler Co. sets the standards of excellence and pushes the limits of design throughout the world. Whether we are creating kitchen and bath products, tile and furniture collections, engines and generators or luxury hotels and resorts to championship golf courses, our work is born from a desire to design experiences that make the world more gracious.

Over the years we have created and acquired an impressive portfolio of brand of which a few are presented in this brochure.

Kitchen & Bath Group

Recognized as a global leader in design and innovation, the Kitchen & Bath Group manufactures fixtures, faucets, cabinetry and accessories for residential, commercial and industrial markets worldwide.

KOHLER
JACOB DELAFON
ENGLEFIELD
KARAT
SANJURA
MIRA
STERLING
DARYL
NOVITA
HYTEC
RADA

Global Power Group

Providing dependable residential, industrial and marine power solutions, the Global Power Group manufactures generators, transfer switches, switchgear and controllers, and engines.

KOHLER POWER SYSTEMS
SDMO
MAQUIGERAL
UPSL
KOHLER ENGINES
LOMBARDINI

Interiors Group

Offering exquisite collections by some of the world's most renowned designers, the Interiors Group is comprised of 2 luxury home furnishing divisions – decorative products and furniture.

KALLISTA
BAKER
ANN SACKS
MCGUIRE
ROBERN

Hospitality & Real Estate Group

The Hospitality & Real Estate Group's portfolio boasts the first-and-only Forbes 5 Star hotel property in Wisconsin, world-class championship golf courses as well as a 5AA Red Star property.

KOHLER, WISCONSIN, USA
THE AMERICAN CLUB RESORT
RIVERBEND PRIVATE CLUB
KOHLER WATERS SPA
BLACKWOLF RUN GOLF COURSES
WHISTLING STRAITS GOLF COURSES
KOHLER ORIGINAL CHOCOLATE

ST ANDREWS, SCOTLAND
OLD COURSE HOTEL:
GOLF RESORT & SPA
HAMILTON GRAND RESIDENCES
THE DUKES GOLF COURSE





KALLISTA®

Simple elegance, singular artistry.
Faucets, fixtures and suites for the
bath and powder room.

Founded in 1979, KALLISTA – Greek for “most beautiful” – combines timeless aesthetics with superb craftsmanship to create kitchen and bath collections that are second to none.

Every KALLISTA design is created from the finest materials. Exquisite details are carefully articulated to express a simple, singular elegance that works in harmony with today’s sophisticated interiors.

In partnering with world-renowned designers and architects, KALLISTA Collections bring global inspiration to the world’s most distinguished residences and luxury destinations.

DESIGN VISION

We partner with the very best. Our world-renowned KALLISTA designers reimagine luxury for the kitchen and bath. Their visionary work elevates the simple pleasures of bathing and grooming to high art.



BARBARA BARRY

Among the world's most prominent, talented designers, Barbara Barry's architecturally-inspired works are in harmony with refined environments, thanks to their ageless elegance. Whether it's her Original, Counterpoint, or Tuxedo. Collections for KALLISTA, it's clear why Barry's sculptural-meets-minimalist designs have earned the praise of her peers and the press: they elevate baths and dressing rooms to settings of subtle sophistication.



LAURA KIRAR

As the founder and creative director of Laura Kirar TRU Design, Kirar's New York and Miami teams work together to create elegant, innovative and timeless interiors and products for the home. Her subtle, inspiring KALLISTA Collections – Vir Stil and Vir Stil Minimal – are extensions of that artistic passion, offering an infusion of originality and thoughtful attention to detail in the world's most distinguished spaces.



MICHAEL S SMITH

Recognized as one of the design industry's most respected talents, Michael S. Smith emphasizes residential and commercial work, with nods to European tradition and American modernism. Smith's KALLISTA Collections – For Loft, For Town and Inigo. – are evocative. Exuding historic romance that spans eras, Smith's pieces incorporate everything from classic marble and figured mahogany to polished nickel and antique silver.



BJARKE INGELS

Lauded, technologically-savvy architect Bjarke Ingels – founder of Denmark-based BIG Bjarke Ingels Group – earned a reputation for creating tradition-defying sustainably minded buildings and projects. His timeless Taper. by BIG Collection for KALLISTA. marries form and function with architectural lines and an unmistakably urban vibe. In addition to teaching at Harvard, Yale, Columbia and Rice Universities, Ingels received the Architectural Innovator of the Year Award from the Wall Street Journal in 2011.



MICK DE GIULIO

The founder of de Giulio kitchen design in Chicago, Mick de Giulio has created pieces that have graced extraordinary residences globally for more than 30 years. Recipient of the 2012 House Beautiful Kitchen of the Year award, among other design accolades, de Giulio has designed kitchens for Ritz-Carlton residences and an exclusive condo development project on Chicago's Magnificent Mile. His task-oriented, design-savvy line of chef-inspired kitchen sinks for KALLISTA. – crafted from 16-gauge stainless steel – feature integrated accessories that ensure beauty and functionality are at one.



Barbara Barry



Mick De Giulio



Bjarke Ingels

INSPIRED BEAUTY



Laura Kirar



Michael S. Smith



For Town Collection

Inspired by the cinematic architecture of the 1930s and 1940s, the pieces feel appropriate in a variety of kitchen and bath environments – from a traditional New York apartment to a Mediterranean house in Bel Air.

by Michael S. Smith



Tuxedo Collection

Barbara Barry explored the inherent beauty of antique sterling flatware as the driving inspiration for the Tuxedo collection. It introduces a refined simplicity ideal for a classic tile-and-marble bathroom as well as a modern, minimalist décor.

by Barbara Barry



Vir Stil Collection

In her Vir Stil collection for KALLISTA, Laura Kirar marries compelling design details with beautiful modern forms. Laura juxtaposes several key design influences, from Danish modern to Bauhaus, ultimately creating something that is thoroughly unique, thoroughly beautiful.

by Laura Kirar



Per Se Collection

Per Se is a faucet collection that embodies slender, soft modern minimalism. Meaning "in itself," Per Se embraces its name with an aesthetic that has an intuitively beautiful base form and is welcoming with thoughtful composition.

by Kallista Collection



Taper by BIG Collection

The Taper Collection for KALLISTA is designed by acclaimed, technologically savvy architect Bjarke Ingels founder of New York and Copenhagen-based BIG Bjarke Ingels Group – who has earned a reputation for creating tradition-defying sustainably minded buildings and projects. This collection marries form and function with architectural lines and an unmistakably urban vibe.

by Bjarke Ingels



Bellis Collection

The Bellis Collection is reminiscent of the classic plumbing vernacular of the 1920s. Inspired by tapping into a hint of past comfortable traditional forms, it has sculptural elements that feel soft to the touch. Knurling detail in the faucet bonnet and soft form make the collection appropriate for relaxed traditional settings.

by Kallista Collection



One Collection

Sophisticated modern, the One Collection by KALLISTA infuses minimalist design elements with the essence of warmth and generosity. Embracing the discipline of geometry simply and completely, the One Collection blends precision with thoughtfully proportioned components.

by Kallista Collection

A woman with dark hair, wearing a black wide-brimmed hat with a ribbon and bright red lipstick, is lying in a white bathtub filled with water. Her hands are raised to the brim of her hat. The background is a dark, textured wall.

Jacob Delafon
PARIS

LÀ OÙ COMMENCE L'ÉLÉGANCE

A single tress, a touch or two of beady perfume and that legendary allure...

That "je ne sais quoi" that renders the French woman so elegant and intriguing.

Though never quite defined, the magic is still real; expressed in a sparkling glance, a particular walk, a manner of speaking, of having fun, or simply of being.

Is there a place that reflects such beauty? A place in which to live with her imperfections, intelligence, her touch of folie or, quite simply, her true nature.

This place does indeed exist; a temple of sorts, a secret garden some say, where each woman may reveal her full beauty.

To be herself, simply beautiful.

Jacob Delafon. Where elegance begins.

Collection
STILLNESS



Jacob Delafon
PARIS
LÀ OÙ COMMENCE L'ÉLÉGANCE

IRREVERENT

An ideally intimate space where individuals can simply be themselves with no taboos or modesty. To freely express their share of impertinence behind closed doors... This is the Jacob Delafon spirit infused into each new collection.

GENUINE

Expertise, choice of materials, beauty of movement, sense of forms and attention to detail are key to Jacob Delafon. For over 125 years the brand has continued to innovate according to its traditions. Renewing itself without turning its back on the past.

ELEGANCE

Jacob Delafon bathrooms present restrained, harmonious beauty and refined taste. An ultimate showcase where those who inhabit these spaces can reveal their own natural elegance.



Collection
REPLAY

Duality and harmony go hand in hand to create an unusual collection where two different worlds merge in intertwining lines and curves. This bathroom will reveal your elegance, nonchalance or any other facet of your personality.

Collection
TERRACE

This collection showcases ceramic fixtures that are inspired by key geometric principles. The pieces create a unique, elegant space with an assertive personality for a luxury look. Here time stands still and beauty is the focus.

Collection
PRESQU'ÎLE

Classic beauty is never a matter of chance. This romantic collection reveals sensual curves and elegant, feminine finishes. Treat yourself to the pleasure of a sophisticated bathroom with a typically Parisian feel.

Collection
RYTHMIK

At times, originality comes from exceptional purity. Pared-down lines, graphical shapes and assertive styling result in a dynamic collection that will appeal to the boldest individuals. This suite is for those who are always on the move.

Collection
SOPRANO

This bathroom is composed of elements that come together and merge in total balance. The generous collection provides optimal storage solutions so every beauty secret will find its place.

Collection
ELITE

When it comes to bathtubs, true innovation does not only stand in new shape or bigger size. What really matters is a framework that you can rely on for its toughness and its comfort. Introducing the Elite bathtub range with Flight technology, a new association of materials that combine the advantages of Cast Iron with acrylic-resin: easier to handle and durable.

Collection
HALO

Halo has reached maturity, with vanity tops and a number of coordinating pieces and accessories that are now available in 5 dimensions, 3 finishes, and 4 materials. All in all, this is certainly the broadest range ever seen to suit your requirements.





KOHLER®

**Living on the
Leading Edge of
Design and Technology**

Kohler Co. is a recognized global leader in kitchen and bath design. Its diversity of products and powerful portfolio of brands lead the way in design, craftsmanship and innovation – knit together by a singular level of quality over a broad range of price points. Since 1998, Kohler Co. has doubled in size and is today a leading international plumbing brand. Consumers the world over marvel at the elevated fashion, form and functionality of KOHLER, plumbing from Delhi to Mexico City.

KOHLER Historic Milestones

Founded in 1873 and headquartered in KOHLER, Wis., Kohler Co. is one of America's oldest and largest privately held companies. KOHLER is present on 6 continents and has more than 50 manufacturing locations, with hundreds of sales offices worldwide. KOHLER is a global leader in the manufacture of kitchen and bath products, engines and power generation systems, tile and home interiors, and is an international host to award-winning hospitality and world-class golf destinations.

1883

First Cast Iron Bathtub

John Michael KOHLER takes a horse trough, heats it to 925°C, covers it with enamel powder and furnishes it with four legs and ornamental feet, to serve as the first Kohler bathtub.



1927

Launch of Color Co-ordinated Plumbing Fixtures

Enameled bathtubs and vitreous china toilets and sinks in matching pastel colors are introduced as industry first. From that point on, KOHLER plumbing products meant beautiful form as much as reliable function.



1929

Exhibit at New York Metropolitan Museum of Art

KOHLER black plumbing fixtures are exhibited at The Metropolitan Museum of Art in New York City.



1965

The Bold Look of Kohler

This year marked the launch of THE BOLD LOOK OF KOHLER, an advertising campaign and array of exciting new plumbing products in vivid accent colors. The campaign was also significant because it solidified a culture and attitude within the company.



1985

Introduction of Artist Editions

Inspired by decorated plumbing fixtures created by resident artists in the company pottery, Kohler Co. introduces Artist Editions, a portfolio of surface-decorated fixtures that make a striking statement in the bath and powder room.



2005

Launch of Purist Hatbox, Kohler's First Tankless Toilet

The stylish and tankless Purist Hatbox toilet is launched at New York City's annual Fashion Week. In fall of the same year, it was launched during the International Fashion Week in Shanghai.

2008

Launch of Karbon Articulating Kitchen Faucet

Karbon articulating kitchen faucet wins the prestigious Reddot Design Award.



2009

Turning Showering on its Head – Flipside Handshower

Kohler Co. launches Flipside handshower and shower head, creating innovative showering experience as well as award-winning television commercial.



2011

Launch of Numi Toilet

Numi, KOHLER's most advanced toilet, is launched in Asia and worldwide.



2013

140 Year Anniversary

Kohler Co. celebrates 140 years of cutting-edge design and innovations.



2014

Moxie Showerhead + Wireless Speaker

KOHLER introduces the Moxie Showerhead + Wireless Speaker, the first of its kind to combine the delivery of music and water creating a truly unique showering experience.



2015

Global launch of Veil intelligent toilet

Veil combines stunning good looks and state-of-the-art technology. Since its introduction it made waves around the world and is a big hit with designers, architects and consumers alike.

Unique Products Inspired by Art

When Kohler's creative team produces a new design, there are many factors to consider: durability, safety, quality, practicality, technology and the environment. If these elements are the bedrock of any KOHLER product, it is the inspirational uniqueness of our creations that separate us from the pack. Consistently drawing inspiration from the world of art, Kohler seeks not only to improve our lives but to make them more elegant, refined and beautiful.

KOHLER





01



02

01 Veil

When technology meets art.

Balanced curves and ultra-responsive controls set the Veil toilet apart. The epitome of minimalist and ergonomic design, its sculpted form pairs with a suite of customized features fine-tuned to offer optimum hygiene and the ultimate in individual comfort.

02 Tresham

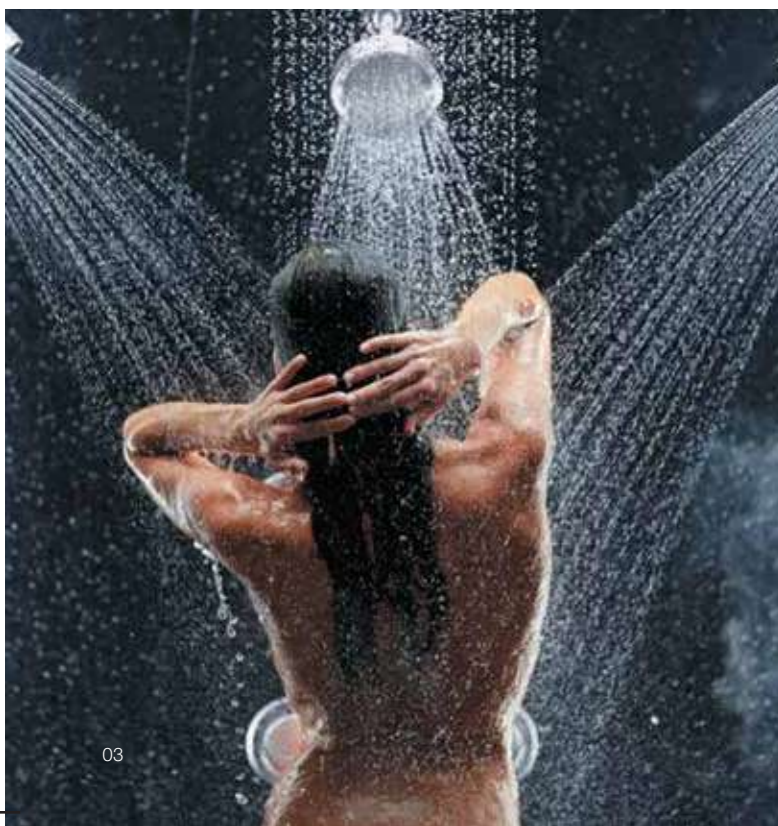
This collection is steeped in the traditions of classic American design while embracing a modern eclectic sensibility. Tresham vanities, toilets, sinks and shower receptors bring this playful eccentricity, this eclectic elegance to the bathroom. Go live your life. With a twist.

03 DTV+™

KOHLER DTV+™ showering brings water, sound, steam and light together for a true multi-sensory showering experience. Using a digital thermostatic valve system, DTV+™ requires one or two valves for the complete experience of water, lighting, steam and music. Each valve provides either two, three or six ports for an array of showering components that you set in motion through the digital touch screen.

04 Derring

Inspired by studio pottery, the Derring collection celebrates the inherent beauty and authenticity of handcrafted ceramics. Each sink is a one-of-a-kind creation, finished with unique artisanal glazes that produce fascinating surface effects. A hand-carved texture accentuates the glazes' subtle tonal variations. Featured in neutral hues, this sink can be the centerpiece of your bath, or it can serve as a unifying element that pulls everything else together.



03



04

05 Composed

Delight in detail.

The Composed faucet collection by KOHLER is a design stripped of non-essential flourishes. Composed embodies simplicity. Clean. Classic. Quietly confident. It exemplifies refinement among KOHLER products as it forms an original composition that is at once unique yet comfortably familiar.

06 Avid

The Sensuous Side of Simple

Evolving the minimalist design ethos, the Avid faucet collection marries art of simplicity with dynamic sensibility. Slender arcs, smooth planes, arresting angles — each detail is designed to be encountered. Each element an essential part of the whole, Avid brings clarity and comfort to modern interiors.



05



06

07 Beitou

The Nature of Tranquility.

The Beitou faucet collection from KOHLER strikes a balance between architectural forms and the stunning displays of nature. The result is a peaceful interplay of invention and appeal that speaks to quiet moments of sanctuary.

08 Artifacts

Uncover a wealth of possibilities.

Inspired by turn-of-the-century charm, each piece in the Artifacts faucet and accessory collection is like a vintage treasure rediscovered. At home in any decor, the Artifacts collection gives you the freedom to create a look that is yours and yours alone.



07



08



Trusted in New Zealand Since 1982

ENGLEFIELD OFFERS THE TOTAL BATHROOM SOLUTION

Whatever the style and features you are looking for, the Englefield range will give you the freedom to create a bathroom to fit both your taste and your budget. Englefield offers you a comprehensive collection of bathroomware so you can maintain consistency with your design. The Englefield range ensures you have a range of choices that work together to create a fully integrated look.



ENGLEFIELD BATHROOMS

For over 3 decades, Englefield has been the preferred bathroom brand for people building new homes or renovating their existing bathroom. It is a well known and trusted brand across Australasia. Englefield became part of the Kohler Co. in 2000.



ENGLEFIELD IS FAMILY!
Everyone is different. We realize this and we've tailored our products to suit nearly everyone. You'll always find something which really suits you, your family and your lifestyle with Englefield.



ENGLEFIELD IS FUN!
Designing or fitting a new bathroom needn't be a task or a chore, it should be fun! With Englefield, discover a world of innovation which you can call your own.



ENGLEFIELD IS AFFORDABLE!

For style that is inspirational, innovative and affordable! We have the bathroom of your dreams today.



Trusted in New Zealand Since 1982

Global Project References

Remarkable Exterior. Stunning Interior.

It is said that it's what's on the inside that counts. We believe that's true. That's why KOHLER has created exceptional designed products for every interior space. From public settings to guest rooms, KOHLER will help transform any property from a place to visit to a place to indulge.

Fairmont Peace Hotel
Shanghai, China



The St. Regis Bahia Beach Resort
Puerto Rico



The Grand Ho Tram Strip Hotel
Ba Ria-Vung, Vietnam



Crown Towers
Manila, Philippines



Sofitel Villas
Nusa Dua, Bali, Indonesia



The Club Hotel
Singapore



The Westin Peachtree Plaza
Atlanta Georgia, USA



Fairmont
Yangcheng Lake, China



Marriott Executive Apartments
Bangkok, Thailand



Capri Hotel Residences
Brisbane, Australia



Hotel Des Arts
Ho Chi Minh City, Vietnam



Four Points by Sheraton
Indonesia



Hotel Indigo
Bangkok, Thailand



Mulu Marriott Resort & Spa
Mulu, Malaysia



St. Regis
New York, USA



Raffles Makkah Palace
Mecca, Saudi Arabia



Global Reach

Our products grace the interior of buildings throughout the world: from the incredible Burj Khalifa in Dubai to The Savoy in London.

America

Trump International Hotel & Tower
Plaza Athene
Andaz
Intercontinental
The Plaza, A Fairmont Hotel
Cosmopolitan
Trump Hotel
Wynn Encore
St. Regis
Hilton Convention Center
Waldorf-Astoria
St. Regis
Grand Hyatt
W
W
Four Seasons
Ritz-Carlton
Ritz-Carlton
Orra
JW Marriott
Elysian
Trump International Hotel & Tower
The Roosevelt (Waldorf-Astoria)
The Nines (Luxury Collection)
JW Marriott
Falling Rock at Napacon Woodlands
Bel Air
White House

Canada

Ritz-Carlton
Shangri-La
Four Seasons
Fairmont Pacific Rim
Shangri-La
Westin
Westin Bayshore, BC

Caribbean

Regent Grand
St. Regis
Ritz-Carlton Residences
Seven Stars Resort
The Cove at the Atlantis

Mexico

Banyan Tree Cabo Marques
Four Seasons
St. Regis
Westin
Lagunamar Cancun

India / Pakistan

ITC Fortune
Gateway Hotel (Taj)
Leela Kempinski
Leela Palace
Marriott
Oberoi
Radisson
Taj Lands End

Central & South America

JW Marriott Guanacaste
Las Casitas del Colca (Orient Express)
Tambor del Inka (Luxury Collection)
Trump

Africa

Fairmont
Four Seasons
Four Seasons
Marmouia
Soresta Sharm
Taj

Thailand

Anantara Hotel & Resort
Park Hyatt
Marriott Hotel
Mandarin Oriental Hotel
Indigo Hotel
Indigo Hotel
Rosewood Hotel
Kempinski Hotel
Cape Sienna
Marriott
Shangri-La
Siam Kempinski
Sofitel Phokeethra
W
Hollywood, CA
Vail, CO
Austin, TX
Charlotte, NC
Dallas, TX
Dallas, TX
Chicago, IL
Chicago, IL
Chicago, IL
Chicago, IL
New Orleans, LA
Portland, OR
Indianapolis, IN
Farmington, PA
Beverly Hills, CA
Washington, D.C.

Australia / Fiji

Crown Casino
Noosa Sanctuary Resort
Sheraton
Sri Stamford Hotel
The Victoria Hotel
Melbourne

Indonesia

Residence 8 @ Senopati
Ancol Mansion
Four Seasons Condo
Pakujuwono Residence
Grand Hyatt
Fairmont Prambanan
Four Seasons Hotel
Bvlgari Hotel & Resort
Inter-Continental Hotel
Bali
Bali
Bali
Bali

Philippines

Solare Resorts and Casino
Edades Tower and Gordon Villas
Ayala Premiere Projects
Park Residences
Bay Garden Club and Residences
Plantation Bay Resort and Spa
Grand Midori Residences

Singapore

Inter-Continental Hotel
Ritz-Carlton Residences
The Orchard Residences
The Fullerton Bay Hotel
Hamilton Scotts
Conrad Hotel
Four Seasons Hotel
W Hotel
Andara Residence
Seven Palms, Sentosa Cove
Fraser Residence Orchard
JW Marriott Hotel

Greater China

W Hotel
Disney Hotel
Four Seasons
Ritz-Carlton
Venetian
Macau
Wynn
Grand Hyatt
Hilton
The Ritz-Carlton Hotel
National Stadium
JW Marriott
Sofitel Grand
Peace Hotel (Fairmont)
Sheraton Hotel
Sheraton Hotel
Shenzhen
Guangzhou International Sports Arena
Ritz-Carlton
Pullman
Conrad
Hilton

Laos

Rosewood Hotel & Resort
Luangprabang

South Korea

JW Marriott Hotel
Inter-Continental Hotel
Indigo Hotel
Four Seasons Hotel
The Shilla Hotel
Sheraton D-cube City
Lotte Super Tower
The Shilla Hotel
Lotte Hotel
Hyatt Regency
We've the Zenith

Malaysia

Northshore Gardens @ Desa ParkCity
West Side 1 @ Desa ParkCity
Pavilion Residences
Zahra Pentah
Tiffan by iZen @ Mont Kiara
Istana Negara @ Jalan Duta
Pearl Slonor
Korby Heights @ Sri Hartamas
Serene Kiara I @ Sri Hartamas
Casa Bella @ Kota Damansara
Telaga Hotel @ Langkawi

Middle East

St. Regis
Westin
Atlantis
Burj Khalifa
Emirates Palace
Intercontinental
Abu Dhabi
Abu Dhabi
Dubai
Dubai
Abu Dhabi

United Kingdom/Ireland

Four Seasons
The Savoy, A Fairmont Hotel
Crazy Bear
Gilligarth Park
Sheraton
Fairmont
Royal Horseguards
Royal Yacht
London, UK
London, UK
London, UK
Devon, UK
Fota Island, Ireland
St. Andrews, Scotland
London, UK
Jersey

Europe

Bo/Am't's im Park Bad
Ciragan Kempinski
Four Seasons
Four Seasons
Four Seasons
Four Seasons V
Hotel Okura
Morozov Hotel
Ritz-Carlton
Istanbul
Ritz-Carlton
National Stadium
Sofitel Grand
Peace Hotel (Fairmont)
Sheraton Hotel
Sheraton Hotel
Shenzhen
Guangzhou International Sports Arena
Ritz-Carlton
Pullman
Conrad
Hilton



International Awards

Our products have been honored with numerous global design and other awards including Red Dot, IF, IDEA, Good Design Award, Water Sense and many more.

2016

Winner: Beltout Faucet
IF
Winner: Exhale Shower Filter
IF
Winner: Protask kitchen faucet
IF

2015

Silver: Veil Intelligent Toilet
Design For Asia Awards
Finalist: C3-150
IDEA
Finalist: Karing+
IDEA
Finalist: RO Under-Counter Water Filtration
IDEA
Winner: Bidet seat, C3-150
IF
Winner: Prolific Sink
IF
Winner: Prolific Sink
Red Dot
Winner: Composed
Red Dot
Winner: Avid
Red Dot

2014

Winner: Fluency
IF
Winner: Fluency
Red Dot
Winner: Moxie
IF
Finalist: Veil
IDEA
Winner: Veil
The Most Successful Design
Merit Recognition: Moxie
Design For Asia Awards
Best of Category: Moxie
a3d Trophy Awards
Good Design Award: Moxie
Good Design Awards

2013

Design Award: Numi +
The Most Successful Design
Design Award: Strayt Faucet
The Most Successful Design
Silver: Moxie
IDEA / IDSA
Finalist: Strayt Faucet
IDEA / IDSA
Innovation Award: Terrace Freedrain
IseoBain
Silver: Moxie
IDEA / IDSA
**China Good Bathroom Product and
China Good Ceramic Awards**
Successful Design:
Airfoil Faucet Series, Toobi
Good Design Awards
NUMI, Steward Waterless Urinal
Readers' Choice Award for Product Innovation
Underscore VibrAcoustic Bath
ha+d awards

2012

Design Award: Karing Intelligent Toilet
Red Dot
Design Award: Karing Intelligent Toilet
IDEA / IDSA
Design Award: Muiyun bath
The Most Successful Design
Design Award: Strayt Faucet
The Most Successful Design
Winner: Shower Enclosure
Red Dot
Winner: Kohler Torsion
Red Dot
Silver: Elevance Bath
IDEA / IDSA
IF Award: Numi
IF
Design Award: Airfoil Faucet Series
Shanghai
IDEA Award: Xinyue Integrated Toilet
IDEA
Design Award: Xinyue Integrated Toilet
Red Dot
The Most Elegant Taste Award
(Life Style)
Sohu Top Ten Most Trusted
Consumer Bathroom Product Brand
Product Design Award: NUMI, Airfoil Faucet Series
IF
Successful Design: Comfortable Bath
Successful Design

2011

Good Design Award: Numi
Good Design Award
Good Design Award: Steward Waterless Urinal
Good Design Award
Good Design Awards: Numi
JDP
Design Award: Airfoil Faucet Series
Successful Design
Design Award: Numi
Successful Design
Design Award: Steward Waterless Urinal
JDP
Best Design
(Trendshome)
Green Medal Award: Green Product Award
Green Love
Top Ten Most Trusted Consumer
Brand Award (Sohu Household)
Annual Top Ten Bathroom
Product Brands
Most Competitive Restaurant Brand Award
Shanghai Building Materials
The Most Elegant Taste Award
(Life Style)
Sohu Top Ten Most Trusted
Consumer Bathroom Product Brand
Excellence Award
EPA 2011 WaterSense
Award – Leader Level (USA)
Greenbuild 2011 Green Exhibitor

2010

Honorable Mention: Reve Ceramic Bidet
Red Dot
Shortlisted: Consumer Product Design
Design Week Awards
100 Best New Products
Professional Remodeller
Merit Award: Flipside Handshower
Numi+
MVP: Flipside Handshower
Building Products MVP Awards
Merit Award: Stages Kitchen Sink
Red Dot
Design Award: Ujini Cabinet
K+BB Product Innovator Awards
2009
Honorable Mention: Mira Divisa Electric Shower
Red Dot
Honorable Mention: Crevasse Sink
Red Dot
Bronze: Karbon Faucet
IDEA / IDSA
MVP: Karbon Faucet
Building Products MVP Awards
Honorable Mention: Karbon Faucet
International Design Magazine
MVP: Safe Toilet
Building Products MVP Awards
Design Award: Safe Toilet
USA
New Product Award: Express Install Vanities
FBI - NSPE Mega Company

2008

Green Product Award: Persuade Toilet
Building Products MVP Awards
Design Award: Karbon Faucet
Autodesk SPARK
Merit Award: Karbon Faucet
K+BB Product Innovator Awards
Merit Award: Karbon Faucet
Interior Design Best of Year
Design Award: Safe Toilet
Interior Design Best of Year
Merit Award: Crevasse Sink
K+BB Product Innovator Awards
Merit Award: Crevasse Sink
Interior Design Best of Year
K&B Award: Express Install Vanities
HOME Magazine
1st Place: Express Install Vanities
Governor's New Products Award
Design Award: M Series with Cold Storage
Chicago Athenaeum
Design Award: M Series with Cold Storage
HOME Magazine
Design Award: Reflexion Lighting
Women's Day K&B Awards
Design Award: Reflexion Lighting
Product Brands
Design Award: Tripoint Touchless Faucet
Shanghai Building Materials
Good Design Awards
Honorable Mention: Archer Petite Vanity
Women's Day K&B Awards
100 Best New Products: Evoke Swing Spout Faucet
Professional Builder
2nd Place: Zofe Soft Seat Toilet Seat
Governor's New Products Award

2007

Finalist: DVT II with WaterTile Ambient Rain
and SoundTile Speakers
Interior Design Best of Year
Finalist: Evoke Pullout Kitchen Faucet
Interior Design Best of Year
Finalist: One Pot Filler
Interior Design Best of Year
Design Award: Steward S Waterless Urinal
Interior Design Best of Year
Good Design Awards: Robem M Series Cabinet w/
Cold Storage Cabinet
Chicago Athenaeum
Design Award: Robem M Series Cabinet w/
Cold Storage Cabinet
American Kitchen & Bath Award from Steve Bassell
1st Place: Cimarron Comfort Height Toilet
(applies to all Class Five toilets)
National Society of Professional Engineers
Design Award: Purist Hatbox Toilet
Red Dot
Design Award: Steward Waterless Urinal
Red Dot
2nd Place: Steward Waterless Urinal
Governor's New Products Award
Bronze: Steward Waterless Urinal
IDSA & Business Week magazine
Environmental Innovation Award:
Steward Waterless Urinal
WI Business Friend of the Environment
Design Award: Transitions Toilet Seat
American Kitchen & Bath Award from HOME Magazine
Honorable Mention: Transitions Toilet Seat
Governor's New Products Award
3rd Place: Kohler DTV
Governor's New Products Award
Design Award: Robem Night Light
HOME Magazine
Innovator Award: Robem Night Light
Kitchen & Bath Business
Honorable Mention: Sterling Accord Shower
/Bath Enclosure
Governor's New Products Award
1st Place: C3 Toilet Seat
Women's Day Specials KB Award

2006

1st Place: Cimarron Comfort Height Toilet
Governor's New Products Award
1st Place: Conexion Whipped
Women's Day Specials KB Award
1st Place: Purist Hatbox Toilet
Woman's Day Specials KB Award
Top Product: Purist Hatbox Toilet
The Robb Report
Design Award: WaterTile
IF
Bronze IDEA Award: WaterTile
IDSA & Business Week magazine
3rd Place: WaterTile
Governor's New Products Award
Design Award: WaterTile
MVP
Readers Choice Awards: Touchless Sensor Faucets (Tripoint)
Commercial Building Products
Best Product: Touchless Sensor Faucets (Tripoint)
Builder News Magazine
Product Innovator Award: Robem Night Light
Kitchen & Bath Business





Corporate Headquarters Kohler Co. 444 Highland Drive Kohler, WI 53044

