

# Product Catalogue

Water Heater | Water Filtration | Heat Pump | Water Pump | Hand Dryer



# Recharge your energy with ours

We need energy to live. As a family business, we endeavour to ensure that energy will still be available in tomorrow's world. That is why we advocate environmentally responsible and efficient building services that safeguard investment. We act for the future – yours and ours.

Since 1924, STIEBEL ELTRON has been synonymous with reliable solutions for domestic hot water, heating, ventilation and cooling. We maintain a clear focus in the energy debate: electricity, preferably harnessed from renewables, is the energy of the future. That is why we rely on approximately 3900 employees around the world for efficient heating solutions with green technologies.

From the design and manufacture of your appliance through to its maintenance, we systematically apply our expertise, strength of innovation and experience – gained from working with customers with high standards, such as yourself, and from the sale of more than two million appliances each year. We

have the right solution to meet any requirement. Solutions designed to raise the level of convenience in your home today and still be up to date tomorrow.

You can see first hand our commitment to green technology by visiting the Energy Campus at our head office in Holzminden, Germany. This training and communication centre is our flagship project for sustainable and resource-efficient construction. It combines the highest standards of architectural and communication quality. As a PlusEnergy building, it generates more energy than it consumes. Come and experience what our name stands for – in theory and practice.



## Contents

### Shower unit

› DX ECO	05
› DX Series	06
› DZ Series	06
› AQE Series	07
› DE Series	07
› WS-2 Series	08
› DS EC Series	10
› IS-2 Series	10
› XG EC Series	11
› XG BLACK EDITION	11
› XGL EC Series	12
› WL EC Series	12
› STIEBEL CHROME-2	14
› STIEBEL BLACK	14

### Multi point unit

› DMT 6	17
› DDH EC Series	17
› DHC 4 XG	18
› DHC XG Series	18
› DHC EC Series	20
› DHC EL	20
› DDC EC Series	21
› DHC ILEC Series	21

### Multi point unit 3 (phase) power supply

› DHE SLi 25A	23
› DHB-E Series	24
› DHF Series	24

### Storage water heater

› EVS	27
› ESH PLUS-T	27

### Heat pump

› WWK (H)	29
-----------	----

### Water filter

› FOUNTAIN 7S	32
› RAIN PLUS	33
› NATURE	33
› STREAM 5S	36
› GLACIER	36
› MAXSTREAM	37
› MAXSOFT	37
› STIEBEL HOUSE PS-2	40
› STIEBEL HOUSE ACB-2	40

### Water pump

› STIEBEL BOOST	42
-----------------	----

### Hand dryer

› HTE 4	44
---------	----

### Accessories

› STIEBEL AQUA	45
› VITA Shower Filter	46





“ All life is change – at home, as well as at work. And I don’t mind, because it keeps me on my toes. But when I’m in the shower, I don’t want any surprises. A constant 37.5 °C from beginning to end is what I need to help me relax after an eventful day.”



# Compact and sustainable - the eco-friendly model makes the difference

The DX ECO combines a compact size with an eco-friendly material concept. The durable casing developed in cooperation with GC is made from 100% recycled ABS plastic, greatly reducing the environmental impact.



## DX ECO

- › Temperature adjustment via step-less power control with rotary knob
- › Complete set optimized for a single shower
- › Corrosion free copper heating element for longer service life
- › Highly efficient composite polymer tank for reduced heat loss and electricity saving
- › 5-in-1 shower head with wall bracket
- › Compact design for space saving installation
- › Eco-friendly concept with casing made from 100% recycled material
- › Anti-scalding and overheating protection with double action thermostat
- › Protection from electric shock with Earth Leakage Sensing Device (ELSD)
- › Protection class IP25 (splash-proof)



DX ECO



		SHOWER UNIT
Type		DX ECO
Design		Open outlet
Minimum inlet water pressure		0.015 MPa (0.15 bar)
Maximum inlet water pressure		0.5 MPa (5 bar)
Water connection		G1/2" (external thread)
Electrical connection		1/N/PE/AC 220...240 V.
Dimension (W x H x D)		186 x 264 x 76 mm
Weight		0.94 kg
Rated power	Rated current	(kW - A)
220 V		4.5 - 20.5
230 V		4.9 - 21.3
240 V		5.4 - 22.5

**DX Series**

- › Temperature adjustment via step-less power control with rotary knob
- › Complete set optimized for a single shower
- › Highly efficient composite polymer tank for reduced heat loss and electricity saving
- › Corrosion free copper heating element for longer service life
- › 5-in-1 shower head with wall bracket
- › Compact design for space saving installation
- › Anti-scalding and overheating protection with double action thermostat
- › Protection from electric shock with Earth Leakage Sensing Device (ELSD)
- › Protection class IP25 (splash-proof)



reddot design award

DX Series



Type	SHOWER UNIT	
	DX 35 E	DX 45 E
Design	Open outlet	Open outlet
Minimum inlet water pressure	0.015 MPa (0.15 bar)	0.015 MPa (0.15 bar)
Maximum inlet water pressure	0.5 MPa (5 bar)	0.5 MPa (5 bar)
Cold water connection	G1/2" (external Thread)	G1/2" (external Thread)
Electrical connection	1/N/PE/AC 220...240 V.	1/N/PE/AC 220...240 V.
Dimension (W x H x D)	186 x 264 x 76 mm	186 x 264 x 76 mm
Weight	0.94 kg	0.94 kg
Rated power	Rated current	(kW - A)
220 V	3.5 - 15.9	4.5 - 20.5
230 V	3.8 - 16.5	4.9 - 21.3
240 V	4.2 - 17.5	5.4 - 22.5

**DZ Series**

- › Temperature adjustment via step-less power control with rotary knob
- › Complete set optimized for a single shower
- › Corrosion resistant copper heating element and tank
- › 5-in-1 shower head with wall bracket
- › Compact design for space saving installation
- › Anti-scalding and overheating protection with double action thermostat
- › Protection from electric shock with Earth Leakage Sensing Device (ELSD)
- › Protection class IP25 (splash-proof)



reddot design award

DZ Series



Type	SHOWER UNIT	
	DZ 35 E	DZ 45 E
Design	Open outlet	Open outlet
Minimum inlet water pressure	0.015 MPa (0.15 bar)	0.015 MPa (0.15 bar)
Maximum inlet water pressure	0.5 MPa (5 bar)	0.5 MPa (5 bar)
Water connection	G1/2" (external Thread)	G1/2" (external Thread)
Electrical connection	1/N/PE/AC 220...240 V.	1/N/PE/AC 220...240 V.
Dimension (W x H x D)	186 x 264 x 76 mm	186 x 264 x 76 mm
Weight	1.2 kg	1.2 kg
Rated power	Rated current	(kW - A)
220 V	3.5 - 15.9	4.5 - 20.5
230 V	3.8 - 16.5	4.9 - 21.3
240 V	4.2 - 17.5	5.4 - 22.5

### AQE Series

- › Temperature adjustment via step-less power control with rotary knob
- › Complete set optimized for a single shower
- › Highly efficient composite polymer tank for reduced heat loss and electricity saving
- › Corrosion free copper heating element for longer service life
- › 5-in-1 shower head with slide bar for convenient height adjustment
- › Anti-scalding and overheating protection with double action thermostat
- › Protection from electric shock with Earth Leakage Sensing Device (ELSD)
- › Protection class IP25 (splash-proof)



AQE Series



Type	SHOWER UNIT	
	AQE 35 E	AQE 45 E
Design	Open outlet	Open outlet
Minimum inlet water pressure	0.015 MPa (0.15 bar)	0.015 MPa (0.15 bar)
Maximum inlet water pressure	0.5 MPa (5 bar)	0.5 MPa (5 bar)
Cold water connection	G1/2" (external thread)	G1/2" (external thread)
Electrical connection	1/N/PE/AC 220...240 V.	1/N/PE/AC 220...240 V.
Dimension (W x H x D)	200 x 360 x 110 mm	200 x 360 x 110 mm
Weight	1.2 kg	1.2 kg
Rated power	Rated current	(kW - A)
220 V	3.5 - 15.9	4.5 - 20.5
230 V	3.8 - 16.5	4.9 - 21.3
240 V	4.2 - 17.5	5.4 - 22.5

### DE Series

- › Temperature adjustment via step-less power control with rotary knob
- › Complete set optimized for a single shower
- › Highly efficient composite polymer tank for reduced heat loss and electricity saving
- › Corrosion free copper heating element for longer service life
- › 5-in-1 shower head with wall bracket
- › Compact design for space saving installation
- › Anti-scalding and overheating protection with double action thermostat
- › Protection from electric shock with Earth Leakage Sensing Device (ELSD)
- › Protection class IP25 (splash-proof)



DE Series



Type	SHOWER UNIT	
	DE 35 E	DE 45 E
Design	Open outlet	Open outlet
Minimum inlet water pressure	0.015 MPa (0.15 bar)	0.015 MPa (0.15 bar)
Maximum inlet water pressure	0.5 MPa (5 bar)	0.5 MPa (5 bar)
Water connection	G1/2" (external thread)	G1/2" (external thread)
Electrical connection	1/N/PE/AC 220...240 V.	1/N/PE/AC 220...240 V.
Dimension (W x H x D)	184 x 308 x 78 mm	184 x 308 x 78 mm
Weight	1.0 kg	1.0 kg
Rated power	Rated current	(kW - A)
220 V	3.5 - 15.9	4.5 - 20.5
230 V	3.8 - 16.5	4.9 - 21.3
240 V	4.2 - 17.5	5.4 - 22.5



# Style meets comfort in your bathroom

Luxurious matte black in clean contrast is the perfect match for any bathroom interior. Even more shower comfort is provided by the upgraded model with increased power, making it especially suitable for the cooler season.

## WS-2 Series

- › Temperature adjustment via step-less power control with rotary knob
- › Complete set optimized for a single shower
- › Corrosion resistant copper heating element and tank
- › 5-in-1 shower head with slide bar for convenient height adjustment
- › Anti-scalding and overheating protection with double action thermostat
- › Protection from electric shock with Earth Leakage Sensing Device (ELSD)
- › Protection class IP25 (splash-proof)



WS-2 Series



Type	SHOWER UNIT		
	WS 35 E-2	WS 45 E-2	WS 55 E-2
Design	Open outlet	Open outlet	Open outlet
Minimum inlet water pressure	0.015 MPa (0.15 bar)	0.015 MPa (0.15 bar)	0.03 MPa (0.3 bar)
Maximum inlet water pressure	0.5 MPa (5 bar)	0.5 MPa (5 bar)	0.5 MPa (5 bar)
Water connection	G½" (external thread)	G½" (external thread)	G½" (external thread)
Electrical connection	1/N/PE/AC 220...240 V.	1/N/PE/AC 220...240 V.	1/N/PE/AC 220...240 V.
Dimension (W x H x D)	200 x 326 x 79 mm	200 x 326 x 79 mm	200 x 326 x 79 mm
Weight	1.4 kg	1.4 kg.	1.5 kg
Rated power			
Rated current	(kW - A)	(kW - A)	(kW - A)
220 V	3.5 - 15.9	4.5 - 20.5	5.5 - 25.0
230 V	3.8 - 16.5	4.9 - 21.3	6.0 - 26.0
240 V	4.2 - 17.5	5.4 - 22.5	6.5 - 27.0

# Instantaneous water heaters for unlimited comfort and convenience

Shower units provide domestic hot water instantly where needed directly in the shower. They are perfect for greater demand at higher temperatures and provide warm shower water without waiting. With shower head sets included, they are the complete solution for single showers.

Precise electronic temperature control ensures shower comfort with a STIEBEL temperature to the degree, even if the temperature of the inlet water is changing or someone is opening the faucet next to the shower.

## Instantaneous water heater - single unit



	<b>Page 11</b>	<b>Page 11</b>	<b>Page 12</b>	<b>Page 12</b>	<b>Page 13</b>	<b>Page 13</b>
<b>Type</b>	<b>DS EC Series</b>	<b>IS E-2 Series</b>	<b>XG EC Series</b>	<b>XG Black Edition</b>	<b>XGL EC Series</b>	<b>WL EC Series</b>
Power (watt)	3500, 4500, 6000	3500, 4500, 6000	3800, 4800	4500	3800, 4800	3500, 4500
Color	White	White	White	Black	White	Silver
Tank type	Copper tank	Copper tank	X-TRA Tank	X-TRA Tank	X-TRA Tank	Copper tank
Nominal tank volume (Liter)	0.26, 0.30	0.45	0.30	0.30	0.30	0.26
Dimension (W x H x D) mm	212 x 342 x 85	210 x 350 x 96	216 x 342 x 73	216 x 342 x 73	216 x 342 x 73	200 x 326 x 79
Weight (kg)	1.5	1.7	1.8	1.8	1.5	1.4
Accessories	✓	✓	✓	✓	✓	✓
Soap tray	✓	-	-	-	-	-
Slide bar	✓	✓	✓	✓	✓	✓
Shower head set	Chrome	Chrome	Chrome	Chrome	Matte black	Chrome
Water/splash-proof	IP25	IP25	IP25	IP25	IP25	IP25
Temperature control	step-less power control	step-less power control	step-less power control	step-less power control	step-less temperature control 30-42 °C	step-less temperature control 30-42 °C

**DS EC Series**

- › Temperature adjustment via step-less power control with rotary knob
- › Elegant LED light band to indicate operation
- › Complete set optimized for a single shower
- › Corrosion resistant copper heating element and tank
- › 5-in-1 shower head with slide bar for convenient height adjustment
- › Anti-scalding and overheating protection with double action thermostat
- › Protection from electric shock with Earth Leakage Circuit Breaker (ELCB)
- › Protection class IP25 (splash-proof)



DS EC Series



Type	SHOWER UNIT		
	DS 35 EC	DS 45 EC	DS 60 EC
Design	Open outlet	Open outlet	Open outlet
Minimum inlet water pressure	0.015 MPa (0.15 bar)	0.015 MPa (0.15 bar)	0.015 MPa (0.15 bar)
Maximum inlet water pressure	0.5 MPa (5 bar)	0.5 MPa (5 bar)	0.5 MPa (5 bar)
Water connection	G½" (external thread)	G½" (external thread)	G½" (external thread)
Electrical connection	1/N/PE/AC 220...240 V.	1/N/PE/AC 220...240 V.	1/N/PE/AC 220...240 V.
Dimension (W x H x D)	212 x 342 x 85 mm	212 x 342 x 85 mm	212 x 342 x 85 mm
Weight	1.5 kg	1.5 kg	1.7 kg
Rated power	(kW - A)	(kW - A)	(kW - A)
Rated current	(kW - A)	(kW - A)	(kW - A)
220 V	3.5 - 15.9	4.5 - 20.5	6.0 - 27.3
230 V	3.8 - 16.5	4.9 - 21.3	6.6 - 28.7
240 V	4.2 - 17.5	5.4 - 22.5	7.1 - 29.5

**IS-2 Series**

- › Temperature adjustment via step-less power control with rotary knob
- › Complete set optimized for a single shower
- › Corrosion resistant copper heating element and tank
- › 5-in-1 shower head with slide bar for convenient height adjustment
- › Anti-scalding and overheating protection with double action thermostat
- › Protection from electric shock with Earth Leakage Sensing Device (ELSD)
- › Protection class IP25 (splash-proof)



IS-2 Series



Type	SHOWER UNIT		
	IS 35 E-2	IS 45 E-2	IS 60 E-2
Design	Open outlet	Open outlet	Open outlet
Minimum inlet water pressure	0.015 MPa (0.15 bar)	0.015 MPa (0.15 bar)	0.03 MPa (0.3 bar)
Maximum inlet water pressure	0.5 MPa (5 bar)	0.5 MPa (5 bar)	0.5 MPa (5 bar)
Water connection	G½" (external thread)	G½" (external thread)	G½" (external thread)
Electrical connection	1/N/PE/AC 220...240 V.	1/N/PE/AC 220...240 V.	1/N/PE/AC 220...240 V.
Dimension (W x H x D)	210 x 350 x 96 mm	210 x 350 x 96 mm	210 x 350 x 96 mm
Weight	1.7 kg	1.7 kg	1.7 kg
Rated power	(kW - A)	(kW - A)	(kW - A)
Rated current	(kW - A)	(kW - A)	(kW - A)
220 V	3.5 - 15.9	4.5 - 20.5	6.0 - 27.3
230 V	3.8 - 16.5	4.9 - 21.3	6.6 - 28.7
240 V	4.2 - 17.5	5.4 - 22.5	7.1 - 29.5

## XG EC Series

- › Temperature adjustment via step-less power control with rotary knob
- › Complete set optimized for a single shower
- › X-TRA Tank highly efficient composite polymer tank for reduced heat loss and electricity saving
- › Corrosion free copper heating element for longer service life
- › 5-in-1 shower head with slide bar for convenient height adjustment
- › Super-slim design with 7.3 cm depth
- › Anti-scalding and overheating protection with double action thermostat
- › Protection from electric shock with Earth Leakage Circuit Breaker (ELCB)
- › Protection class IP25 (splash-proof)

Type	SHOWER UNIT	
	XG 38 EC	XG 48 EC
Design	Open outlet	Open outlet
Minimum inlet water pressure	0.015 MPa (0.15 bar)	0.015 MPa (0.15 bar)
Maximum inlet water pressure	0.5 MPa (5 bar)	0.5 MPa (5 bar)
Water connection	G $\frac{1}{2}$ " (external thread)	G $\frac{1}{2}$ " (external thread)
Electrical connection	1/N/PE/AC 220...240 V.	1/N/PE/AC 220...240 V.
Dimension (W x H x D)	216 x 342 x 73 mm	216 x 342 x 73 mm
Weight	1.8 kg	1.8 kg
Rated power	Rated current	(kW - A)
220 V	3.8 - 17.3	4.8 - 21.8
230 V	4.2 - 18.3	5.2 - 22.6
240 V	4.5 - 18.7	5.7 - 23.7

## XG BLACK EDITION

- › 10 years warranty on heating element
- › Temperature adjustment via step-less power control with rotary knob
- › Complete set optimized for a single shower
- › X-TRA Tank highly efficient composite polymer tank for reduced heat loss and electricity saving
- › Corrosion free copper heating element for longer service life
- › 5-in-1 shower head with slide bar for convenient height adjustment
- › Super-slim design with 7.3 cm depth
- › Anti-scalding and overheating protection with double action thermostat
- › Protection from electric shock with Earth Leakage Circuit Breaker (ELCB)
- › Protection class IP25 (splash-proof)

Type	SHOWER UNIT	
	XG BLACK EDITION	
Design	Open outlet	
Minimum inlet water pressure	0.015 MPa (0.15 bar)	
Maximum inlet water pressure	0.5 MPa (5 bar)	
Water connection	G $\frac{1}{2}$ " (external Thread)	
Electrical connection	1/N/PE/AC 220...240 V.	
Dimension (W x H x D)	216 x 342 x 73 mm	
Weight	1.8 kg	
Rated power	Rated current	
220 V	4.5 - 20.5	
230 V	4.9 - 21.3	
240 V	5.4 - 22.5	



XG EC Series



XG BLACK EDITION



**XGL EC Series**

- › Maximum shower comfort with precise electronic output temperature control
- › Temperature adjustment via step-less rotary knob
- › LCD display conveniently shows the shower water temperature
- › Complete set optimized for a single shower
- › X-TRA Tank Highly efficient composite polymer tank for reduced heat loss and electricity saving
- › Corrosion free copper heating element for longer service life
- › 5-in-1 shower head with slide bar for convenient height adjustment
- › Super-slim design with 7.3 cm depth
- › Anti-scalding and overheating protection with double action thermostat
- › Protection from electric shock with Earth Leakage Circuit Breaker (ELCB)
- › Protection class IP25 (splash-proof)

Type	SHOWER UNIT	
	XGL 38 EC	XGL 48 EC
Design	Open outlet	Open outlet
Minimum inlet water pressure	0.015 MPa (0.15 bar)	0.015 MPa (0.15 bar)
Maximum inlet water pressure	0.5 MPa (5 bar)	0.5 MPa (5 bar)
Water connection	G $\frac{1}{2}$ " (external thread)	G $\frac{1}{2}$ " (external thread)
Electrical connection	1/N/PE/AC 220...240 V.	1/N/PE/AC 220...240 V.
Dimension (W x H x D)	216 x 342 x 73 mm	216 x 342 x 73 mm
Weight	1.5 kg	1.5 kg
Rated power	Rated current	(kW - A)
220 V	3.8 - 17.3	4.8 - 21.8
230 V	4.2 - 18.3	5.2 - 22.6
240 V	4.5 - 18.7	5.7 - 23.7



XGL EC Series



**WL EC Series**

- › Maximum shower comfort with precise electronic output temperature control
- › User-friendly temperature adjustment via touch buttons
- › LCD display conveniently shows the shower water temperature
- › Maximum comfort with 3 temperature memory buttons
- › Complete set optimized for a single shower
- › Corrosion resistant copper heating element and tank
- › 5-in-1 shower head with slide bar for convenient height adjustment
- › ECO-function for automatic control of required power to save electricity
- › Spa-function for hot/cold hydrotherapy to improve blood circulation
- › Child-safety function to set temperature limit to 35°C
- › Anti-scalding and overheating protection with double action thermostat
- › Protection from electric shock with Earth Leakage Circuit Breaker (ELCB)
- › Protection class IP25 (splash-proof)

Type	SHOWER UNIT	
	WL 35 EC	WL 45 EC
Design	Open outlet	Open outlet
Minimum inlet water pressure	0.015 MPa (0.15 bar)	0.015 MPa (0.15 bar)
Maximum inlet water pressure	0.5 MPa (5 bar)	0.5 MPa (5 bar)
Water connection	G $\frac{1}{2}$ " (external thread)	G $\frac{1}{2}$ " (external thread)
Electrical connection	1/N/PE/AC 220...240 V.	1/N/PE/AC 220...240 V.
Dimension (W x H x D)	200 x 326 x 79 mm	200 x 326 x 79 mm
Weight	1.4 kg	1.4 kg
Rated power	Rated current	(kW - A)
220 V	3.5 - 15.9	4.5 - 20.5
230 V	3.8 - 16.5	4.9 - 21.3
240 V	4.2 - 17.5	5.4 - 22.5



WL EC Series





# Premium instantaneous water heaters with rain shower system for maximum relaxation

Shower units provide domestic hot water instantly where needed directly in the shower. They are perfect for greater demand at higher temperatures and provide warm shower water without waiting. With shower head sets included, they are the complete solution for single showers.

The ultimate relaxation experience for your body and soul is awaiting you with the premium rain shower systems designed to match exclusive interiors.

## Instantaneous water heater - single unit with rain shower set



	<b>Page 14</b> <b>STIEBEL CHROME-2</b>	<b>Page 14</b> <b>STIEBEL BLACK</b>
<b>Type</b>		
Power (watt)	4500	6000
Color	Silver gray	Black
Tank type	Copper tank	Copper tank
Nominal tank volume (Liter)	0.26	0.30
Dimension (W x H x D) mm	212 x 342 x 85	212 x 342 x 85
Weight (kg)	1.5	1.7
Accessories	✓	✓
Soap tray	✓	✓
Slide bar	✓	✓
Shower head set	Chrome	Matte black
Water/splash-proof	IP25	IP25
Temperature control	step-less power control	step-less power control

**STIEBEL CHROME-2**

- › Temperature adjustment via step-less power control with rotary knob
- › Complete set optimized for a single shower
- › Elegant LED light band to indicate operation
- › Corrosion resistant copper heating element and tank
- › Chromium rain shower system and 5-in-1 shower head on slide bar
- › Anti-scalding and overheating protection with double action thermostat
- › Protection from electric shock with Earth Leakage Circuit Breaker (ELCB)
- › Protection class IP25 (splash-proof)



STIEBEL CHROME-2



		SHOWER UNIT
<b>Type</b>	<b>STIEBEL CHROME-2</b>	
Design	Open outlet	
Minimum inlet water pressure	0.015 MPa (0.15 bar)	
Maximum inlet water pressure	0.5 MPa (5 bar)	
Water connection	G <sup>1</sup> / <sub>2</sub> " (external thread)	
Electrical connection	1/N/PE/AC 220...240 V.	
Dimension (W x H x D)	212 x 342 x 85 mm	
Weight	1.5 kg	
Rated power	Rated current	(kW - A)
220 V	4.5 - 20.5	
230 V	4.9 - 21.3	
240 V	5.4 - 22.5	

**STIEBEL BLACK**

- › Temperature adjustment via step-less power control with rotary knob
- › Complete set optimized for a single shower
- › Elegant LED light band to indicate operation
- › Corrosion resistant copper heating element and tank
- › Matte black rain shower system and 5-in-1 shower head on slide bar
- › Anti-scalding and overheating protection with double action thermostat
- › Protection from electric shock with Earth Leakage Circuit Breaker (ELCB)
- › Protection class IP25 (splash-proof)



STIEBEL BLACK



		SHOWER UNIT
<b>Type</b>	<b>STIEBEL BLACK</b>	
Design	Open outlet	
Minimum inlet water pressure	0.015 MPa (0.15 bar)	
Maximum inlet water pressure	0.5 MPa (5 bar)	
Water connection	G <sup>1</sup> / <sub>2</sub> " (external thread)	
Electrical connection	1/N/PE/AC 220...240 V.	
Dimension (W x H x D)	212 x 342 x 85 mm	
Weight	1.7 kg	
Rated power	Rated current	(kW - A)
220 V	6.0 - 27.3	
230 V	6.6 - 28.7	
240 V	7.1 - 29.6	



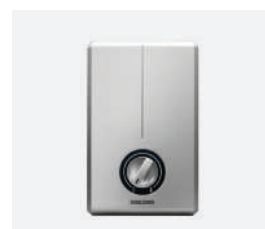
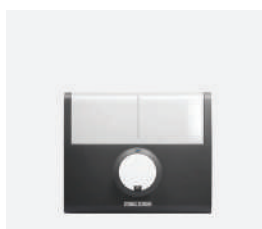
“My first flat. And I’ve got to make the most of the space I have. That is why this compact instantaneous water heater is perfect for me. It delivers the exact amount of hot water I need – and leaves me enough room for my other things.”

# Single phase electric instantaneous water heaters for multiple draw-off points and small to medium hot water demand

Compact and convenient, the single phase electronic instantaneous water heaters from STIEBEL ELTRON deliver hot water to multiple points of use, quickly and efficiently. They are excellent choices for small to medium amounts of hot water, such as are required at a hand washbasin and a shower.

Instantaneous water heaters only ever heat the exact amount of hot water that is currently required. The technology is reliable, durable and never fails to impress.

## Instantaneous water heater - multi point unit



	<b>Page 18</b>	<b>Page 18</b>	<b>Page 19</b>	<b>Page 19</b>
<b>Type</b>	<b>DMT 6</b>	<b>DDH EC Series</b>	<b>DHC 4 XG</b>	<b>DHC XG Series</b>
Power (watt)	6000	6000, 8000	4000	6000, 8000
Color	White	Dark grey	White	Silver
Tank type	Copper tank	Copper tank	Copper tank	Copper tank
Nominal tank volume (Liter)	0.25	0.32	0.32	0.32, 0.37
Dimension (W x H x D) mm	170 x 220 x 80	235 x 197 x 115	216 x 342 x 73	216 x 342 x 73
Weight (kg)	1.4	2.0-2.2	2.0	2.0
Accessories	-	-	-	-
Soap tray	-	-	-	-
Slide bar	-	-	-	-
Shower head set	-	-	-	-
Water/splash-proof	IP25	IP25	IP25	IP25
Temperature control	3-step power control	3-step power control	step-less power control	step-less power control

## DMT 6

- › Temperature adjustment via 3-step power control with rotary knob
- › Sufficient water for multiple draw-off points
- › Corrosion resistant copper heating element and tank
- › Protection class IP25 (splash-proof)



DMT 6

		MULTI POINT
Type	DMT 6	
Design	Closed outlet	
Minimum inlet water pressure	0.08 MPa (0.8 bar)	
Maximum inlet water pressure	1 MPa (10 bar)	
Water connection	G½" (external thread)	
Electrical connection	1/N/PE 220...230 V.	
Dimension (W x H x D)	170 x 220 x 80 mm	
Weight	1.4 kg	
Rated power	Rated current	(kW - A)
220 V	6.0 - 27.3	
230 V	6.6 - 28.7	



## DDH EC SERIES

- › Temperature adjustment via 3-step power control with rotary knob
- › Sufficient water for multiple draw-off points
- › Corrosion resistant copper heating element and tank
- › Compact design for space saving installation
- › Anti-scalding and overheating protection with thermal cut-out
- › Protection from electric shock with Earth Leakage Circuit Breaker (ELCB)
- › Protection class IP25 (splash-proof)



DDH EC Series

		MULTI POINT	
Type	DDH 6 EC	DDH 8 EC	
Design	Closed outlet	Closed outlet	
Minimum inlet water pressure	0.02 MPa (0.2 bar)	0.03 MPa (0.3 bar)	
Maximum inlet water pressure	1 MPa (10 bar)	1 MPa (10 bar)	
Water connection	G½" (external thread)	G½" (external thread)	
Electrical connection	1/N/PE 220...240 V.	1/N/PE 220...240 V.	
Dimension (W x H x D)	235 x 197 x 115 mm	235 x 197 x 115 mm	
Weight	2.0 kg	2.2 kg	
Rated power	Rated current	(kW - A)	(kW - A)
220 V	6.0 - 27.3		8.0 - 36.4
230 V	6.6 - 28.7		8.7 - 37.8
240 V	7.1 - 29.6		9.5 - 39.6





**DHC 4 XG**

- › Temperature adjustment via step-less power control with rotary knob
- › Sufficient water for multiple draw-off points
- › Corrosion resistant copper heating element and tank
- › Super-slim design with 7.3 cm depth
- › Anti-scalding and overheating protection with thermal cut-out
- › Protection from electric shock with Earth Leakage Circuit Breaker (ELCB)
- › Protection class IP25 (splash-proof)



DHC 4 XG



		MULTI POINT
Type	DHC 4 XG	
Design	Closed outled	
Minimum inlet water pressure	0.018 MPa (0.18 bar)	
Maximum inlet water pressure	1 MPa (10 bar)	
Water connection	G $\frac{1}{2}$ " (external thread)	
Electrical connection	1/N/PE 220...240 V.	
Dimension (W x H x D)	216 x 342 x 73 mm	
Weight	2.0 kg	
Rated power	Rated current	(kW - A)
220 V	4.0 - 18.2	
230 V	4.4 - 19.1	
240 V	4.8 - 20.0	

**DHC XG Series**

- › Temperature adjustment via step-less power control with rotary knob
- › Sufficient water for multiple draw-off points
- › Corrosion resistant copper heating element and tank
- › Super-slim design with 7.3 cm depth
- › Anti-scalding and overheating protection with thermal cut-out
- › Protection from electric shock with Earth Leakage Circuit Breaker (ELCB)
- › Protection class IP25 (splash-proof)



DHC XG Series



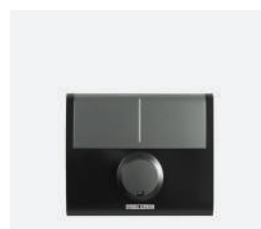
		MULTI POINT	
Type	DHC 6 XG	DHC 8 XG	
Design	Closed outled	Closed outled	
Minimum inlet water pressure	0.02 MPa (0.2 bar)	0.03 MPa (0.3 bar)	
Maximum inlet water pressure	1 MPa (10 bar)	1 MPa (10 bar)	
Water connection	G $\frac{1}{2}$ " (external thread)	G $\frac{1}{2}$ " (external thread)	
Electrical connection	1/N/PE 220...240 V.	1/N/PE 220...240 V.	
Dimension (W x H x D)	216 x 342 x 73 mm	216 x 342 x 73 mm	
Weight	2.0 kg	2.2 kg	
Rated power	Rated current	(kW - A)	(kW - A)
220 V	6.0 - 27.3		8.0 - 36.4
230 V	6.6 - 28.7		8.7 - 37.8
240 V	7.1 - 29.6		9.5 - 39.6

# Single phase electric instantaneous water heaters for multiple draw-off points and medium hot water demand

Compact and convenient, the single phase electronic instantaneous water heaters from STIEBEL ELTRON deliver hot water to multiple points of use, quickly and efficiently. They are excellent choices for medium amounts of hot water, such as are required at a hand washbasin and a shower.

Instantaneous water heaters only ever heat the exact amount of hot water that is currently required. The technology is reliable, durable and never fails to impress.

## Instantaneous water heater - multi point unit



	<b>Page 21</b>	<b>Page 21</b>	<b>Page 22</b>	<b>Page 22</b>
<b>Type</b>	<b>DHC EC</b>	<b>DHC EL</b>	<b>DDC EC</b>	<b>DHC ILEC</b>
Power (watt)	6000, 8000	10000	6000, 8000	6000, 8000
Color	Silver	White	Black	Silver
Tank type	Copper tank	Copper tank	Copper tank	Copper tank
Nominal tank volume (Liter)	0.45	0.50	0.32	0.45
Dimension (W x H x D) mm	200 x 360 x 110	200 x 360 x 110	235 x 197 x 115	210 x 350 x 96
Weight (kg)	2.0	2.0	2.0-2.2	2.3
Accessories	-	-	-	-
Soap tray	-	-	-	-
Slide bar	-	-	-	-
Shower head set	-	-	-	-
Water/splash-proof	IP25	IP25	IP25	IP25
Temperature control	3-step temperature control 40 / 50 / 60 °C	3-step temperature control 40 / 50 / 60 °C	3-step temperature control 40 / 50 / 55 °C	step-less temperature control 40-55 °C

**DHC EC Series**

- › Maximum shower comfort with precise electronic output temperature control
- › 3-step temperature selection (40, 50, 60°C) via rotary knob
- › Sufficient hot water for multiple draw-off points
- › Corrosion resistant copper heating element and tank
- › Optional concealed water connection through the rear wall
- › Manually adjustable flow limiter in cold water inlet for greater energy savings
- › Flame-retardant electronic circuit board with protective cap for extra safety
- › Anti-scalding and overheating protection with thermal cut-out
- › Protection from electric shock with Earth Leakage Circuit Breaker (ELCB)
- › Protection class IP25 (splash-proof)

Type	MULTI POINT	
	DHC 6 EC	DHC 8 EC
Design	Closed outlet	Closed outlet
Minimum inlet water pressure	0.02 MPa (0.2 bar)	0.02 MPa (0.2 bar)
Maximum inlet water pressure	1 MPa (10 bar)	1 MPa (10 bar)
Water connection	G½" (external Thread)	G½" (external thread)
Electrical connection	1/N/PE 220...240 V.	1/N/PE 220...240 V.
Dimension (W x H x D)	200 X 360 X 110 mm	200 X 360 X 110 mm
Weight	2.0 kg	2.0 kg
Rated power	Rated current	(kW - A)
220 V	6.0 - 27.3	8.0 - 36.4
230 V	6.6 - 28.7	8.7 - 37.8
240 V	7.1 - 29.6	9.5 - 39.6

**DHC 10 EL**

- › Maximum shower comfort with precise electronic output temperature control
- › 3-step temperature selection (40, 50, 60°C) via rotary knob
- › Sufficient hot water for multiple draw-off points
- › Corrosion resistant copper heating element and tank
- › Optional concealed water connection through the rear wall
- › Manually adjustable flow limiter in cold water inlet for greater energy savings
- › Flame-retardant electronic circuit board with protective cap for extra safety
- › Anti-scalding and overheating protection with thermal cut-out
- › Protection class IP25 (splash-proof)

Type	MULTI POINT	
	DHC 10 EL	
Design	Closed outlet	
Minimum inlet water pressure	0.02 MPa (0.2 bar)	
Maximum inlet water pressure	1.0 MPa (10 bar)	
Water connection	G½" (external thread)	
Electrical connection	1/N/PE 220...240 V.	
Dimension (W x H x D)	200 X 360 X 110 mm	
Weight	2.0 kg	
Rated power	Rated current	(kW - A)
220 V	9.9	



DHC EC Series



DHC 10 EL



## DDC EC Series

- › Maximum shower comfort with precise electronic output temperature control
- › 3-step temperature selection (40, 50, 55°C) via rotary knob
- › Sufficient water for multiple draw-off points
- › Corrosion resistant copper heating element and tank
- › Compact design for space saving installation
- › Anti-scalding and overheating protection with thermal cut-out
- › Protection from electric shock with Earth Leakage Circuit Breaker (ELCB)
- › Protection class IP25 (splash-proof)



DDC EC Series

Type	MULTI POINT	
	DDC 6 EC	DDC 8 EC
Design	Closed outled	Closed outled
Minimum inlet water pressure	0.02 MPa (0.2 bar)	0.03 MPa (0.3 bar)
Maximum inlet water pressure	1 MPa (10 bar)	1 MPa (10 bar)
Water connection	G½" (external thread)	G½" (external thread)
Electrical connection	1/N/PE 220...240 V.	1/N/PE 220...240 V.
Dimension (W x H x D)	236 X 198 X 115 mm	236 X 198 X 115 mm
Weight	2.0 kg	2.2 kg
Rated power	Rated current	(kW - A)
220 V	6.0 - 27.3	8.0 - 36.4
230 V	6.6 - 28.7	8.7 - 37.8
240 V	7.1 - 29.6	9.5 - 39.6



## DHC ILEC Series

- › Maximum shower comfort with precise electronic output temperature control
- › Step-less temperature selection (40-55°C) via rotary knob
- › LCD display conveniently shows the shower water temperature
- › Maximum comfort with 3 temperature memory buttons
- › Sufficient water for multiple draw-off points
- › Corrosion resistant copper heating element and tank
- › Anti-scalding and overheating protection with thermal cut-out
- › Protection from electric shock with Earth Leakage Circuit Breaker (ELCB)
- › Protection class IP25 (splash-proof)



DHC ILEC Series

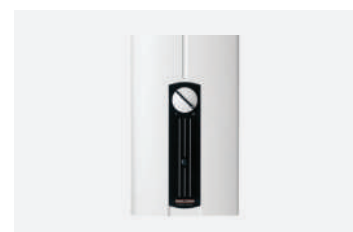
Type	MULTI POINT	
	DHC 6 ILEC	DHC 8 ILEC
Design	Closed outled	Closed outled
Minimum inlet water pressure	0.02 MPa (0.2 bar)	0.02 MPa (0.2 bar)
Maximum inlet water pressure	1 MPa (10 bar)	1 MPa (10 bar)
Water connection	G½" (external thread)	G½" (external thread)
Electrical connection	1/N/PE 220...240 V.	1/N/PE 220...240 V.
Dimension (W x H x D)	210 X 350 X 96 mm	210 X 350 X 96 mm
Weight	2.2 kg	2.3 kg
Rated power	Rated current	(kW - A)
220 V	6.0 - 27.3	8.0 - 36.4
230 V	6.6 - 28.7	8.7 - 37.8
240 V	7.1 - 29.6	9.5 - 39.6



# German engineered hot water continuous flow 3 phase power water heater for multiple draw-off points and large hot water demand

The STIEBEL ELTRON three-phase electric instant hot water heater offers the comfort settings of an electronically controlled instantaneous water heater. With 3i and 4i Technology, there are numerous sensors that actively control the hot water output. This compensates for temperature fluctuations in the water supply delivering a pleasant hot water experience. This ensures that you get your requested hot water temperature to the precise degree.

## Instantaneous water heater - multi point unit with 3 phase power supply



	<b>Page 25</b> <b>DHB Series</b>	<b>Page 24</b> <b>DHE</b>	<b>Page 25</b> <b>DHF Series</b>
<b>Type</b>			
Power (watt)	10000, 24000	18000	13200, 18000
Color	White	White	White
Heating System	Bare wire	Bare wire	Copper Tubular
Nominal tank volume (Liter)	0.40	0.40	0.60
Dimension (W x H x D) mm	225 x 478 x 105	225 x 478 x 105	220 x 370 x 130
Weight (kg)	3.6	4.5	4.0
Accessories	-	-	-
Soap tray	-	-	-
Slide bar	-	-	-
Shower head set	-	-	-
Water/splash-proof	IP25	IP25	IP24
Suitable for solar pre-heated water	-	✓	-
Temperature memory buttons	-	2	-
Temperature control	7-step temperature control 30-60 °C	step-less temperature control 20-60 °C	2-step power control



# STIEBEL's flagship of electric instantaneous continuous flow water heaters

The DHE instant water heater delivers hot water with precision. Comfort is the number one priority as the DHE delivers hot water exactly to the degree.

Utilising 4i Technology, the intelligent fully-electronic water heater compensates for fluctuations in pressure and temperature and using its series of sensors to precisely regulate the hot water output. This ensures that you get your requested hot water temperature to the degree.



## DHE 18 SLi 25A

- › 3-phase electricity
- › Bare wire heating coil provides rapid heating and safe operation
- › Able to increase temperature from 10 to 38 Celcius in 10 seconds
- › Convenient temperate adjustments with optional remote control
- › Exact required temperature to the precise degree



DHE 18 SLi 25A



	MULTI POINT
Type	DHE 18 SLi 25A
Design	Closed outlet
Maximum inlet water pressure	1 MPa ( 10 bar)
Water connection	G½" (external thread)
Electrical connection	3/PE 380...415 V.
Dimension (W x H x D)	225 X 478 X 105 mm
Weight	4.5 kg
Rated power	18 kW
Heating system	Bare wire
Cold water inlet temperature	Max. 60 °C (suitable for solar pre-heated water)
Rated current	25 A

### DHB-E Series

- › 3-phase electricity
- › Bare wire heating coil provides rapid heating and safe operation
- › 7-level heating system
- › IP25 electrical safety standard

Type	MULTI POINT			
	DHB-E 11 SLi	DHB-E 13 SLi	DHB-E 18 SLi 25A	DHB-E 18/21/24 SLi
Design	Closed outlet	Closed outlet	Closed outlet	Closed outlet
Rated operating pressure	1 MPa	1 MPa	1 MPa	1 MPa
Water connection	G $\frac{1}{2}$ " (external thread)	G $\frac{1}{2}$ " (external thread)	G $\frac{1}{2}$ " (external thread)	G $\frac{1}{2}$ " (external thread)
Electrical connection	3/PE 380...415 V.	3/PE 380...415 V.	3/PE 380...415 V.	3/PE 380...415 V.
Dimension (W x H x D)	225 X 478 X 105 mm	225 X 478 X 105 mm	225 X 478 X 105 mm	225 X 478 X 105 mm
Weight	3.6 kg	3.6 kg	3.6 kg	3.6 kg
Temperature setting range	30 - 60	30 - 60	30 - 60	30 - 60
Rated output	11	13.5	18	18 21 24
Rated current	16	19.5	26	29 31 35
Heating system	Bare wire	Bare wire	Bare wire	Bare wire

### DHF Series

- › 13,200 - 18,000 watts
- › 2-stage temperature and output selection
- › IP24 electrical safety standard

Type	MULTI POINT		
	DHF 12 C1	DHF 13 C	DHF 18 C
Design	Closed outlet	Closed outlet	Closed outlet
Rated operating pressure	1 MPa	1 MPa	1 MPa
Water connection	G $\frac{1}{2}$ " (external thread)	G $\frac{1}{2}$ " (external thread)	G $\frac{1}{2}$ " (external thread)
Electrical connection	1/N/PE 220...230 V	3/PE 380...400 V.	3/PE 380...400 V.
Dimension (W x H x D)	220 x 370 x 130 mm	220 x 370 x 130 mm	220 x 370 x 130 mm
Weight	4.0 kg	4.0 kg.	4.0 kg
Protection class to DIN EN 60335	1	1	1
Rated output	12 13.2	13.2	18
Flow rate limiter volume	6.5	6.5	7.0
Flow rate	3.7 l/min	3.7 l/min	5.9 l/min
Nominal water volume	0.6 l	0.6 l	0.6 l
Heating system	Copper Tubular	Copper Tubular	Copper Tubular



DHB-E Series



DHF Series





“ I’ve finished work at last! Now I can relax and unwind. I don’t need much – just some time to myself, a bit of peace and quiet, and a nice warm bath. And the less time I have to wait for the tub to fill up, the more ‘me time’ I can enjoy!”

# Hot water solutions for perfect hot water convenience

Wall mounted storage water heaters from STIEBEL ELTRON are ideal for providing copious amounts of hot water in an instant, both in the bathroom and kitchen. We employ technology that is well known for its reliability and high level of safety. The special enamel coating and integral safety components we use enable us to guarantee a long service life for all of our wall mounted cylinders. STIEBEL ELTRON has the right wall mounted cylinder to suit every installation imaginable, for a fast and flexible supply of hot water to one or more draw-off points.

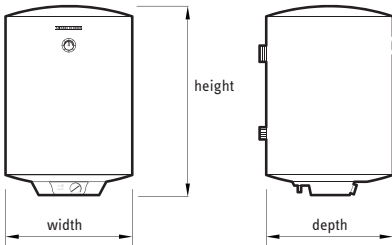
## Storage water heater



Type	Page 28						Page 28					
	EVS 15	EVS 30	EVS 50	EVS 80	EVS 100	EVS 150	ESH 15	ESH 30	ESH 50	ESH 80	ESH 100	ESH 150
Power (Watt)	1500	2000	2000	2000	2000	2000	1500	2000	2000	2000	2000	2000
Color	White						White					
Dimension (W) mm	305	365	390	460	460	460	473	548	790	850	1007	1393
Dimension (H) mm	543	615	745	740	880	1230	332	409	409	505	505	505
Dimension (D) mm	337	390	415	485	485	485	342	419	419	515	515	515
Protection Anode	✓	✓	✓	✓	✓	✓	✓	✓	✓	✓	✓	✓
Temperature range	up to 75 °C						up to 75 °C					
Protection level	IPX4						IP24					

## EVS

- › User-friendly temperature adjustment with control knob in front
- › Sufficient water for multiple draw-off points
- › Thermometer with temperature progress display for settings up to 75 Celcius
- › ELCB (Earth Leakage Circuit Breaker) protection against electric shock



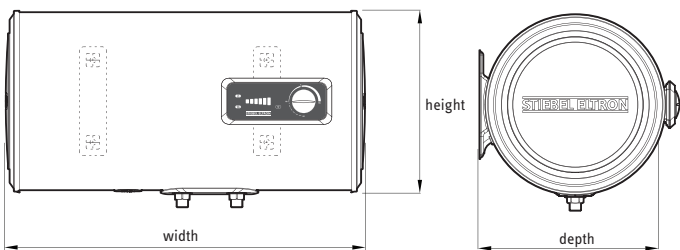
VERTICAL STORAGE WATER HEATER						
Type	EVS 15	EVS 30	EVS 50	EVS 80	EVS 100	EVS 150
Capacity	15 L	30 L	50 L	80 L	100 L	150 L
Power rating (Watt)	1500		2000			
Voltage	220 V					
Permissible operating pressure	0.7 MPa					
Dimension (W) mm	305	365	390	460	460	460
Dimension (H) mm	543	615	745	740	880	1230
Dimension (D) mm	337	390	415	485	485	485
Temperature range	up to 75°C					

EVS



## ESH PLUS-T

- › Wet enameled tank lining better seals the welding seams which significantly increases the tank lifetime
- › Durable and corrosion resistant casing made from tough polypropylene polymer
- › Corrosion resistant copper heating element Made in Germany



HORIZONTAL STORAGE WATER HEATER						
Type	ESH 15 H	ESH 30 H	ESH 50 H	ESH 80 H	ESH 100 H	ESH 150 H
Capacity	15 L	30 L	50 L	80 L	100 L	150 L
Power rating (Watt)	1500		2000			
Voltage	220 V					
Permissible operating pressure	0.7 MPa					
Dimension (W) mm	473	548	790	850	1007	1393
Dimension (H) mm	332	409	409	505	505	505
Dimension (D) mm	342	419	419	515	515	515
Temperature range	up to 75°C					

ESH PLUS-T





“We needed to urgently replace our hot water system with an energy efficient electric system. We have solar panels and, after much research, concluded that a heat pump was the most cost and energy effective solution for our set-up. We always have hot water, it’s quite quiet, and our electricity cost has come right down to not much at all.”

# Reduce energy costs and create environmentally friendly hot water all year round

The WWK 222 (H) and the WWK 302 (H) are compact domestic hot water heat pumps designed specifically for outdoor installation to supply domestic hot water to several draw-off points. Our heat pumps utilize the energy in the air to create environmentally friendly hot water all year round.

## WWK (H)

- › Technologically advanced product as STIEBEL ELTRON has been developing heat pumps since 1976
- › Roll-bond condenser with expansion spring mechanism ensure highest efficiency in heat transfer at all times, surpassing most competitor technologies
- › Plus X Award winner
- › System is Smart Grid ready and can be connected to a solar photovoltaic system to save more cost
- › Easy maintenance due to removable outer hood
- › Easily accessible refrigerant parts for convenient servicing
- › Eco-friendly refrigerant with reduced GWP (global warming potential)



WWK 302 H



Type	HOT WATER HEAT PUMP	
	WWK 222 H	WWK 302 H
Nominal capacity	220 liter	302 liter
Max. DHW Temperature	+65 °C	+65 °C
Application Limits	-5 °C / +42 °C	-5 °C / +42 °C
Max. Operating Pressure	0.8 MPa	0.8 MPa
Power Output HP @30 Degrees	2.4 kW	2.4 kW
Power Output Electric Booster	1.5 kW	1.5 kW
Max. Power Output combined @30 Degrees	3.9 kW	3.9 kW
Max. Power Consumption HP	0.65 kW	0.65 kW
Max. Power Consumption Combined	2.2 kW	2.2 kW
COP - Coefficient of Performance Seasonal Average	3.94	3.94
Average Sound Pressure Level 1 m free Field dB	45 dB(A)	45 dB(A)
Protection Class	IP 24	IP 24
Refrigerant	R134A	R134A
Height	1545 mm	1913 mm
Diameter	690 mm	690 mm
Weight Empty	120 kg	135 kg
Water Connections	G 1 A	G 1 A
Safety Valve Connection	Rp3/4	Rp3/4





“Even a water filter, it is important to have an elegant design to fit with my kitchen too. Not only about the decoration, but also the convenient function that makes our life easier.”

# The healthy drinking water solution for you and your family

The STIEBEL ELTRON water filter reflects the essence of pure and clean water. An extraordinary high quality filter performance and a luxury contemporary design make it a premier drinking water filter for you and your family. Making your own drinking water not only saves you money compared to hassle of buying bottled water. More importantly, it helps to save the environment by reducing plastic pollution - the environmentally friendly choice for current and future generations on our planet.

## Drinking water filter



	<b>Page 33</b>	<b>Page 33</b>	<b>Page 33</b>	<b>Page 34</b>	<b>Page 34</b>
<b>Type</b>	<b>FOUNTAIN 7S</b>	<b>FOUNTAIN 7S</b>	<b>FOUNTAIN 7S</b>	<b>RAIN PLUS</b>	<b>NATURE</b>
Color	Anthracite	Copper gold	Silver grey	Silver	White
Installation type	Counter top	Counter top	Counter top	Counter top	4 in 3 cartridges
Cartridge stages	7 in 1 composite filter	7 in 1 composite filter	7 in 1 composite filter	6 in 2 composite filters	0.26, 0.29
Dimension (W x H x D) mm	160 x 345 x 170	160 x 345 x 170	160 x 345 x 170	120 x 320 x 216	115 x 320 x 434
Weight (kg)	4.0	4.0	4.0	2.3	4.0
Lifetime indicator	✓	✓	✓	✓	-
Outlet type	Flexible pipe	Flexible pipe	Flexible pipe	Double diverter valve	Front knob and faucet

# FOUNTAIN 7S Innovation and Technology

The Fountain 7S has been certified for the NSF Mark (\*) by NSF International.

The Fountain 7S can be installed “counter top” or “wall mounted”.



System tested and certified by NSF International against NSF/ANSI Standard 42 and 53 for the model Fountain 7S (AP-1720) for the reduction of Taste/Odor, Chlorine, Turbidity, Nominal Particulate Class I and VOC

## FOUNTAIN 7S

- › 7 stages in 1 cartridge for easier filter replacement
- › Ultra-filtration technology for 100% bacterial removal without wastewater
- › Certified drinking water safety with NSF 42 & 53 Mark
- › 360° flexible dispenser pipe for wider outlet radius
- › One-way dispenser nozzle to prevent outside intruders
- › Durable ceramic ON/OFF-valve in front for more convenient operation
- › No electricity needed for operation
- › Indicator for filter lifetime (4320 Liter or 12 months whichever comes first)

	WATER FILTER
Type	FOUNTAIN 7S
Installation type	Counter top
Filter cartridge	7 in 1 composite filter
Max. operating pressure	4 bar
Min. operating pressure	1 bar
Max. operating temperature	35 °C
Min. operating temperature	4 °C
Rated service flow	2.7 L per minute
Dimension (W x H x D)	160 X 345 X 170 mm
Weight	4 kg



FOUNTAIN 7S ANTHRACITE



FOUNTAIN 7S COPPER GOLD



FOUNTAIN 7S SILVER GREY



## RAIN PLUS

- › 6 stages in 2 compact encapsulated filters
- › Ultra-filtration technology for 100% bacterial removal without wastewater
- › Timers for reminds the user for filter replacement
- › Antibacterial silver ions for double protection for the water filter
- › Large carbon layers for filtered water with good taste
- › Natural coral sandstone supplies natural calcium to filtered water
- › No electricity nor storage tank needed
- › Easy filter replacement, no tool needed

	WATER FILTER
Type	RAIN PLUS
Installation type	Counter top
Filter cartridge	6 in 2 composite filters
Max. operating pressure	4 bar
Min. operating pressure	1 bar
Max. operating temperature	35 °C
Min. operating temperature	4 °C
Rated service flow	2 L per minute
Dimension (W x H x D)	120 X 320 X 216 mm
Weight	2.3 kg



RAIN PLUS



## NATURE

- › 4 stages in 3 compact encapsulated filters
- › Nano-filtration technology for 99.9999 bacterial, 99.99% virus removal without wastewater
- › Slim design to fit with small kitchen area
- › Able to install as countertop and under sink
- › Able to have 2 outlets at once
- › No electricity nor storage tank needed
- › “Push and Click system” for easy filter replacement

	WATER FILTER
Type	NATURE
Installation type	Under sink, Counter top
Filter cartridge	4 in 3 encapsulated filter 8”
Max. operating pressure	4 bar
Min. operating pressure	1 bar
Max. operating temperature	35 °C
Min. operating temperature	4 °C
Rated service flow	1.9 L per minute
Dimension (W x H x D)	115 X 320 X 434 mm
Weight	4 kg



NATURE





"We used to buy bottled water every week to have clean drinking water for the family. So much plastic waste and so expensive! With our new STIEBEL ELTRON drinking water filter we now save that money and also do our part to protect the environment by reducing waste."

# The healthy drinking water solution for you and your family

The STIEBEL ELTRON water filter reflects the essence of pure and clean water. An extraordinary high quality filter performance and a luxury contemporary design make it a premier drinking water filter for you and your family.

Making your own drinking water not only saves you money compared to hassle of buying bottled water. More importantly, it helps to save the environment by reducing plastic pollution - the environmentally friendly choice for current and future generations on our planet.

## Drinking water filter



	<b>Page 37</b>	<b>Page 37</b>
<b>Type</b>	<b>STREAM 5S</b>	<b>GLACIER</b>
Color	White	White
Installation type	Wall mounted, Under sink	Wall mounted, Under sink
Cartridge type	5 stage in 4 cartridges	5 stage in 4 cartridges
Dimension (W x H x D) mm	290 x 376 x 90	385 x 420 x 165
Weight (kg)	2.8	3.5
Cartridge	✓	✓
Outlet type - Faucet	✓	✓

**STREAM 5S**

- › 5 stages in 4 encapsulated filters for safe performance and hygiene
- › Ultra-filtration technology for 100% bacterial removal without wastewater
- › Antibacterial silver ions for double protection for the water filter
- › Large carbon layers for filtered water with good taste
- › No electricity nor storage tank needed
- › “Push and Click system” for easy filter replacement

WATER FILTER	
Type	STREAM 5S
Installation type	Under sink, wall mounted
Filter cartridge	5 stages in 4 cartridges 13”
Max. operating pressure	4 bar
Min. operating pressure	1 bar
Max. operating temperature	35 °C
Min. operating temperature	4 °C
Rated service flow	2 L per minute
Dimension (W x H x D)	290 X 376 X 90 mm
Weight	2.8 kg



STREAM 5S



**GLACIER**

- › ECO FRIENDLY (EFRO) patented RO membrane reduces the ratio of wastewater to 50% of feed water
- › Certified drinking water safety with NSF 58 Mark\* for the RO membrane
- › Space saver while maintaining maximum filter performance
- › Antibacterial silver ions for double protection for the water filter
- › Big capacity and high-grade storage tank (4.4 gallons)
- › Most compact and light weight RO water purifier in the market
- › German engineered system with 60% less piping than traditional models
- › “Twist” system for easy filter replacement makes the filter exchange very easily without any tool needed.

WATER FILTER	
Type	GLACIER
Installation type	Under sink, wall mounted
Filter cartridge	5 stages in 4 encapsulated cartridges 11”
Max. operating pressure	4 bar
Min. operating pressure	1 bar
Max. operating temperature	35 °C
Min. operating temperature	4 °C
Rated service flow	2 L per minute
Dimension (W x H x D)	385 X 420 X 165 mm
Weight	3.5 kg



GLACIER RO



\* Trade Designation : EFN-2012-150



# An effective solution against contaminations in household and commercial drinking water

STIEBEL ELTRON water filters are the most compact commercial water filters for metropolitan tap water. Being one of the safest household and commercial water filters in the market, they also comes with Sanitary Quick Change filter cartridge for a quick and hygiene cartridge replacement. The commercial water filter can be installed with multiple outlets such as a drinking water faucet and/or fridge, hot/cold water dispenser, coffee machine for your home, restaurant, coffee shop, for office or your factory.

## Commercial water filter



Page 39

### MAXSTREAM

Type	White
Color	White
Installation type	Wall mounted, Under sink
Cartridge type	4 stage in 1 cartridges
Dimension (W x H x D) mm	185 x 500 x 135
Weight (kg)	3
Cartridge	✓
Outlet type - Faucet	✓



Page 39

### MAXSOFT M

Type	White
Color	White
Installation type	Wall mounted, Under sink
Cartridge type	3 stage in 1 cartridges
Dimension (W x H x D) mm	112 x 405 x 118
Weight (kg)	2.4
Cartridge	✓
Outlet type - Faucet	-



Page 39

### MAXSOFT XL

Type	White
Color	White
Installation type	Wall mounted, Under sink
Cartridge type	3 stage in 1 cartridges
Dimension (W x H x D) mm	151 x 548 x 138
Weight (kg)	4.6
Cartridge	✓
Outlet type - Faucet	-

### MAXSTREAM

- › 4 stages in 1 compact encapsulated filter
- › Nano EPM filtration technology for 99.9999% bacterial, 99.99% virus removal and no wastewater
- › Instant high flow for high drinking water demands without wastewater
- › “Plug and Play” installation, no electricity nor storage tank needed
- › Space saver with compact and durable shape
- › Wide range of applications such as direct drinking, hot cold dispenser, fridge, coffee machine and ice maker
- › “Twist” the cartridge for easy filter replacement



MAXSTREAM



COMMERCIAL DRINKING WATER FILTER	
Type	MAXSTREAM
Installation type	Wall mounted, Under sink
Filter cartridge	4 stage in 1 cartridges
Max. operating pressure	4 bar
Min. operating pressure	1 bar
Max. operating temperature	38 °C
Min. operating temperature	5 °C
Rated service flow	5.67 L per minute
Dimension (W x H x D)	185 X 500 X 135 mm
Weight	3 kg (empty) and 4.2 kg (water filled)

### MAXSOFT M, XL

- › 3 stages in 1 compact encapsulated filter
- › Macro-porous opaque white resin made-in-Europe removes up to 51% of hardness and have up to 77% ion exchange efficiency (app. 6% better hardness elimination rate, 11% better ion-exchange efficiency)
- › No yellow color nor odor released into the outlet water
- › Turn-able head with 8 by-pass levels to adjust hardness level to control desired hardness level and for longer lifetime and stable pH level (7.5-7.9) (market product: 6.5-6.8)
- › “Plug and Play” installation, no electricity nor storage tank needed



MAXSOFT M, XL



WATER SOFTENER		
Type	MAXSOFT M	MAXSOFT XL
Installation type	Wall mounted, Under sink	Wall mounted, Under sink
Filter cartridge	3 stages in 1 cartridge	3 stages in 1 cartridge
Max. operating pressure	4 bar	4 bar
Min. operating pressure	1 bar	1 bar
Max. operating temperature	38 °C	38 °C
Min. operating temperature	5 °C	5 °C
Rated service flow *	1 L per minute	1.62 L per minute
Dimension (W x H x D)	112 X 405 X 118 mm	151 X 548 X 138 mm
Weight (empty)	2.4 kg	4.6 kg
(with water filled)	3.8 kg	8.2 kg

\* Instant high flow is possible (up to 5.67 LPM) but performance rate will be reduced.



“My house is located in the place where water is not 100% clean, I am always worried about the water that my family drink or use. However, with the STIEBEL HOUSE pre-filter, I could sit and relax with the water quality.”

# An effective whole house solution to contaminations to municipal and fresh water supplies

Stiebel House Pre Filter is perfect to install both as Point of Entry and/or Point of Use. With the household located in the location with water problems, these would assist you and your family for the greater quality of water.

Pre-filter



	<b>Page 42</b>	<b>Page 42</b>
<b>Type</b>	<b>STIEBEL HOUSE PS-2</b>	<b>STIEBEL HOUSE ACB-2</b>
Color	Black	Black
Installation type	Point of Entry or Point of Use	Point of Entry after pump or Point of Use
Cartridge type	POE/POU PRE filter 20"	POE/POU PRE filter 20"
Dimension (W x H x D) mm	185 x 610 x 210	185 x 610 x 210
Weight (kg)	10	12.5
Filter media	Pleated sediment	Activated carbon block

### STIEBEL HOUSE PS-2

- › Improves water by quality removing contaminants
- › Durable and porous pleated filter media
- › Indirectly improves the water flow because of less-clogging and less maintenance needed for sanitary accessories.
- › Reduces limescale deposit with NSF certified\* anti-limescale balls for shining sanitary accessories
- › Silverlite stone increases the safeness of the whole filter system Suitable for use with various water sources

\* Trade name : Slow phos by P.S.S. Inc. USA

WATER FILTER	
Type	STIEBEL HOUSE PS-2
Installation type	Recommend Point of Entry or Point of Use
Filter cartridge	Pleated sediment, 20"
Max. operating pressure	5 bar
Min. operating pressure	1.5 bar
Max. operating temperature	38 °C
Min. operating temperature	5 °C
Rated service flow @ 3 bar	16 L per minute
Dimension (W x H x D)	185 X 610 X 210 mm
Weight	10 kg

### STIEBEL HOUSE ACB-2

- › Improves water by quality removing contaminants
- › Improves water taste & odor by reducing chlorines, heavy metals, bacteria
- › Indirectly improves the water flow because of less-clogging and less maintenance needed for sanitary accessories.
- › Antibacterial silver ions for double protection for the water filter
- › Suitable for use with various water sources

WATER FILTER	
Type	STIEBEL HOUSE ACB-2
Installation type	Recommend Point of Entry after pump or Point of Use
Filter cartridge	Activated carbon block, 20"
Max. operating pressure	5 bar
Min. operating pressure	1.5 bar
Max. operating temperature	35 °C
Min. operating temperature	5 °C
Rated service flow @ 3 bar	15 L per minute
Dimension (W x H x D)	185 X 610 X 210 mm
Weight	12.5 kg



STIEBEL HOUSE PS-2



STIEBEL HOUSE ACB-2







“Every time when our family use water altogether, the flow remains constant and powerful. We do not have to wait for one to finish using it anymore. And the model is so sophisticated that you could not notice the pump is there.”

# Stiebel Boost home pumps are designed to fulfill highest quality standards with powerful performance.

With its 304 stainless steel pump body, shaft, impeller and flanges, STIEBEL BOOST home pumps are truly premium products based on German engineering. Moreover the pump motor is equipped with a thermal protection, industrial standard motor insulation class F, a pump cover and a pump base to ensure safe outdoor and indoor installation. This combination guarantees a trouble free, safe and superior operation for you and your family.

## STIEBEL BOOST

- › Safety certified according TIS 1548-2551
- › Constant pressure even with multiple taps in use
- › Dry-run protection with Intelligent Automatic Control
- › Optimized for use with water heaters to ensure stable shower water temperature
- › Long service life with corrosion-free parts in stainless steel grade 304
- › Protective cover and base for outdoor installation
- › Nitrogen filled bladder tank for constant water pressure
- › Motor insulation class F for long motor life
- › Thermal motor protection for safe operation
- › Manometer for real-time pressure indication
- › Self-priming function for automatic startup after dry-run and better suction performance
- › External non-return valve not required due to built-in check valve
- › Maintenance-free motor with 5 years warranty



STIEBEL BOOST

Type	STAINLESS STEEL AUTOMATIC PUMP			
	3A-CS	4A-CS	6A-CS	7A-CS
Power input at normal operation (1-16 l/min)				
220 V	300 W	450 W	600 W	750 W
230 V	330 W	490 W	660 W	820 W
240 V	360 W	530 W	710 W	890 W
Max suction lift	9 m	9 m	9 m	9 m
Max head	28 m	36 m	40 m	43 m
Total discharge head*	11 m	16 m	18 m	20 m
Capacity @12m	38 l/min	47 l/min	50 l/min	55 l/min
Switch on	1.5 bar	2.2 bar	2.2 bar	2.2 bar
Switch off	~1 l/min	~1 l/min	~1 l/min	~1 l/min
Suction pipe	1"	1"	1"	1"
Discharge pipe	1"	1"	1"	1"
Taps used simultaneously	3-4	4-5	5-6	6-7

\*When using all indicated taps simultaneously with a flow of 8l/min per each tap





# World innovation the scented hand dryer

The HTE electronic hand dryer is a real hit, not least because of its extraordinarily quiet operation. An intelligent IR proximity sensor switches the unit ON, when you hold your hands 6 to 12 cm below the air outlet, and OFF again when you remove your hands. The robust casing protects the units against damage. Its design also prevents objects, such as cigarette butts, from being deposited on the casing.

## HTE 4

- › Award-winning European design
- › Sensor control
- › Durable plastic casing to avoid damage
- › Easy installation and maintenance
- › Water/splash-proof to IP 23 electrical safety standard
- › Quiet operation at only 54 decibels
- › Meets European EN 60335-1 standard



HTE 4



ELECTRONIC HAND DRYER	
<b>Type</b>	<b>HTE 4</b>
Connection	1/N 220 - 240 V (50 Hz)
Total connected load (watt)	1,800
Fan	70 w
Air flow	146 m <sup>3</sup> /h
Dimension (H x W x D) mm.	238 x 250 x 230
Weight	2.6 kg
Protection / class	IP23 (splash water proof)

# STIEBEL AQUA shower head set

With the high-quality material of a 5-level shower head setting, STIEBEL AQUA provides you a better feeling shower time. It also comes with a durable stainless steel hose. The elegant and modern design will perfectly fit in any desired bathroom.

## STIEBEL AQUA

- › Petal pressure gentle for your skin
- › Water saving
- › Adjustable hose
- › 5-Level shower head setting
- › 6 Months warranty

## 5 LEVEL SHOWER HEAD SETTING



RAIN SPRAY



FULL SPRAY



MASSAGE SPRAY



RAIN SPRAY AND  
MASSAGE SPRAY



MIST SPRAY



STIEBEL AQUA NEUTRAL



STIEBEL AQUA CHROMIUM



STIEBEL AQUA MATTE BLACK



# Your way to a better feeling



VITA ROSE



VITA STRAWBERRY



VITA LAVENDER



VITA GREEN TEA



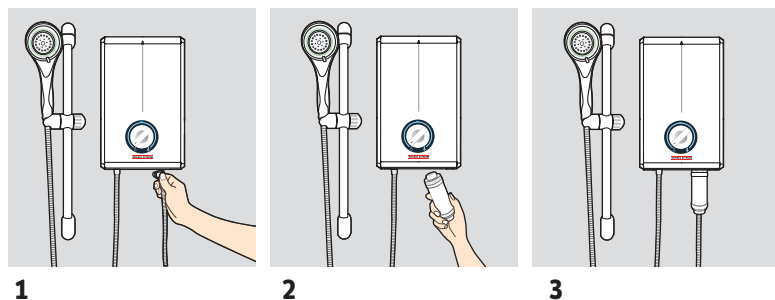
VITA ACACIA



## VITA SHOWER FILTER

- › Reduces chlorine from tap water for better shower quality
- › Natural Vitamin C reduces residual Chlorine and rust from tap water that might cause skin allergy and other allergies.
- › Improve skin and hair condition
- › Good for lung and respiratory health by reducing Chlorine inhalation while showering
- › Reduces skin and body allergies triggered by chlorine and its harmful compounds

## Installation



1

2

3

**Your local trade partner:**



For new and interesting information on our products, visit  
[www.stiebeltronasia.com](http://www.stiebeltronasia.com) or consult your local trade partner.

**STIEBEL ELTRON ASIA LTD. (Head Office) | No. 469 Moo 2, Tambol Klong-jik, Amphur Bangpa-In, Ayutthaya, 13160, Thailand**  
**Phone +66 35 905 000 | Fax +66 35268 271**  
**E-mail: [th-info@stiebel-eltron.com](mailto:th-info@stiebel-eltron.com) | [www.stiebeltronasia.com](http://www.stiebeltronasia.com)**

**Legal notice** | In spite of our careful efforts, we are not liable for any inaccuracies in the content of this brochure. Information concerning equipment levels and specifications is subject to modification. The equipment features described in this brochure are non-binding regarding the specification of the final product. Due to our policy of ongoing improvement, some features may be changed or even removed. Please consult your local dealer for information about the very latest equipment features. The images in this brochure are for reference only. The illustrations also contain installation components, accessories and special equipment that do not form part of the standard delivery. Reprinting of all or part of this brochure is only lawful with the publisher's express permission.