

**AXOR One**  
**Basin mixer Select 170 with push-open waste set**  
 Surfaces: **Chrome** Article Number: **48020000**



### product features

- consists of: Basin mixer, waste set
- ComfortZone 170
- projection: 140 mm
- spout height: 170 mm
- spray type: Normal spray
- maximum flow rate at 3 bar: 5 l/min
- Select cartridge with temperature control
- temperature limitation adjustable
- suitable for continuous flow water heaters
- push-open waste set G 1¼
- material waste set: metal
- connection type: G ¾ connections
- connection dimension: DN15
- cold water in middle position

### Technology



### Design awards



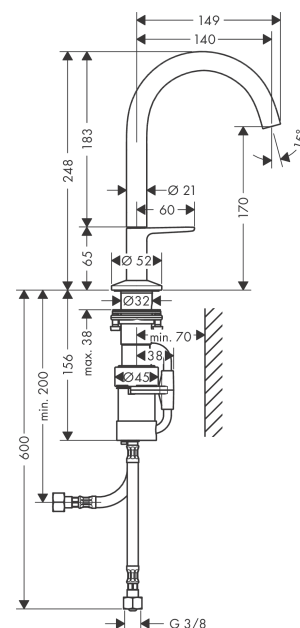
### Certificates



### Product image



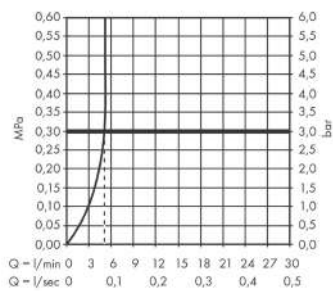
### Scale drawing



**AXOR One**  
**Basin mixer Select 170 with push-open waste set**  
Surfaces: **Chrome** Article Number: **48020000**



## Flowchart

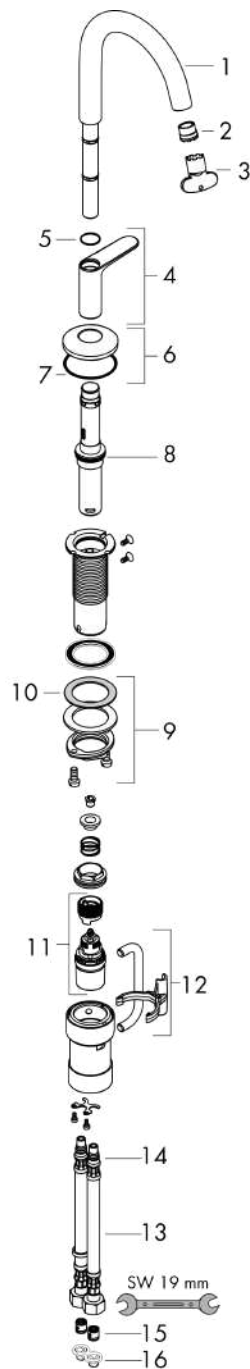


**AXOR One**  
**Basin mixer Select 170 with push-open waste set**  
Surfaces: **Chrome** Article Number: **48020000**



## Exploded Drawing

Year of production: >04/21



**AXOR One**  
**Basin mixer Select 170 with push-open waste set**  
 Surfaces: **Chrome** Article Number: **48020000**



## Spare part list

Year of production: >04/21

Pos.		Article Number	Price	PU
1	spout cpl.	94234000	€ 124,95	1
2	aerator cpl.	93118000	€ 22,37	1
3	special tool	98987000	€ 8,45	1
4	handle for cold water	94739000	-	1
5	-	94259000	€ 3,21	1
6	escutcheon	93998000	€ 35,94	1
7	O-Ring 46x2	98195000	€ 3,21	1
8	O-ring 24x2,5	98145000	€ 3,21	1
9	fixing set (Ø 32)	13961000	€ 22,37	1
10	lever collar	97548000	€ 3,21	1
11	cartridge, assy	92529000	€ 100,44	1
12	connection angel	94262000	€ 57,12	1
13	connection hose 450 mm M8x0,75 G3/8	93405000	€ 35,94	1
14	O-ring 7x1,5	98422000	€ 3,21	1
15	non return valve DW 10	96456000	€ 8,45	1
16	filter packing	95291000	€ 11,31	1
a	push-open waste set	50100000	-	1
b	fixation extension 35 mm	13898000	€ 70,57	1