

## AXOR Edge

Thermostatic module Select 610/100 for concealed installation for 4 outlets

Surfaces: Art. no. : 46720000



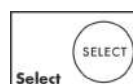
### product features

- Consists of: Thermostatic module, shower holder, baton hand shower, shower hose
- 4 outlets
- thermostat cartridge, start/ stop cartridge
- depending on volume flow and installation situation approx. 50% flow rate reduction and integrated shut off function
- Select push-button on/off control for 4 outlets
- multiple outlets can be run simultaneously
- concealed installation
- Maximum flow rate (at 3 bar): 39 l/min
- flow rate hand shower connection 14 l/min at 3 bar
- Min. operating pressure: 1 bar
- Max. operating pressure: 10 bar
- safety stop at 40°C
- Maximum temperature can be adjusted on installation
- Hose nut: for shower hoses with cylindrical nut on both sides
- Connection type: basic set
- Noise class: I
- thermostat is delivered with buttons Handshower, Flood, RainLarge, Mono
- WRAS 2006331
- WRAS 2006331 - WRAS 2006331\_approval\_letter

### Article Details

Price excl. VAT £ 2,541.25

### Technology



### Design awards



### Certificates



## AXOR Edge

Thermostatic module Select 610/100 for concealed installation for 4 outlets

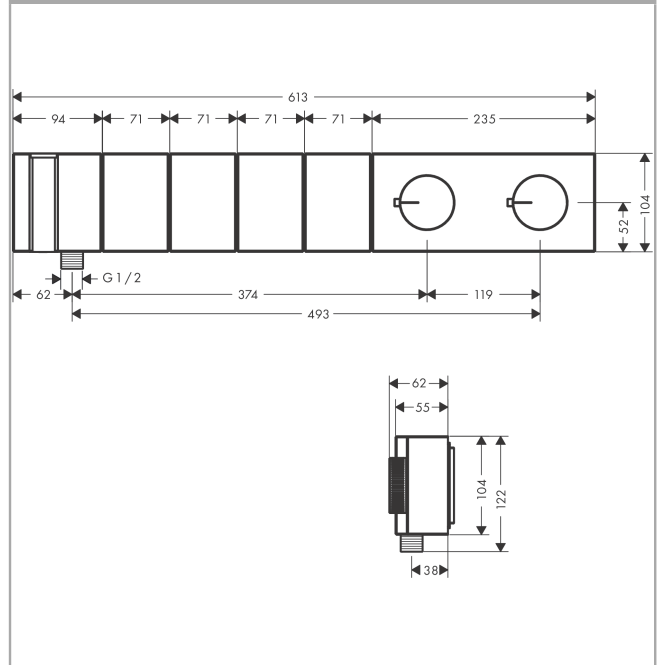
Surfaces: Art. no. : 46720000



### Product image



### Scale drawing



## AXOR Edge

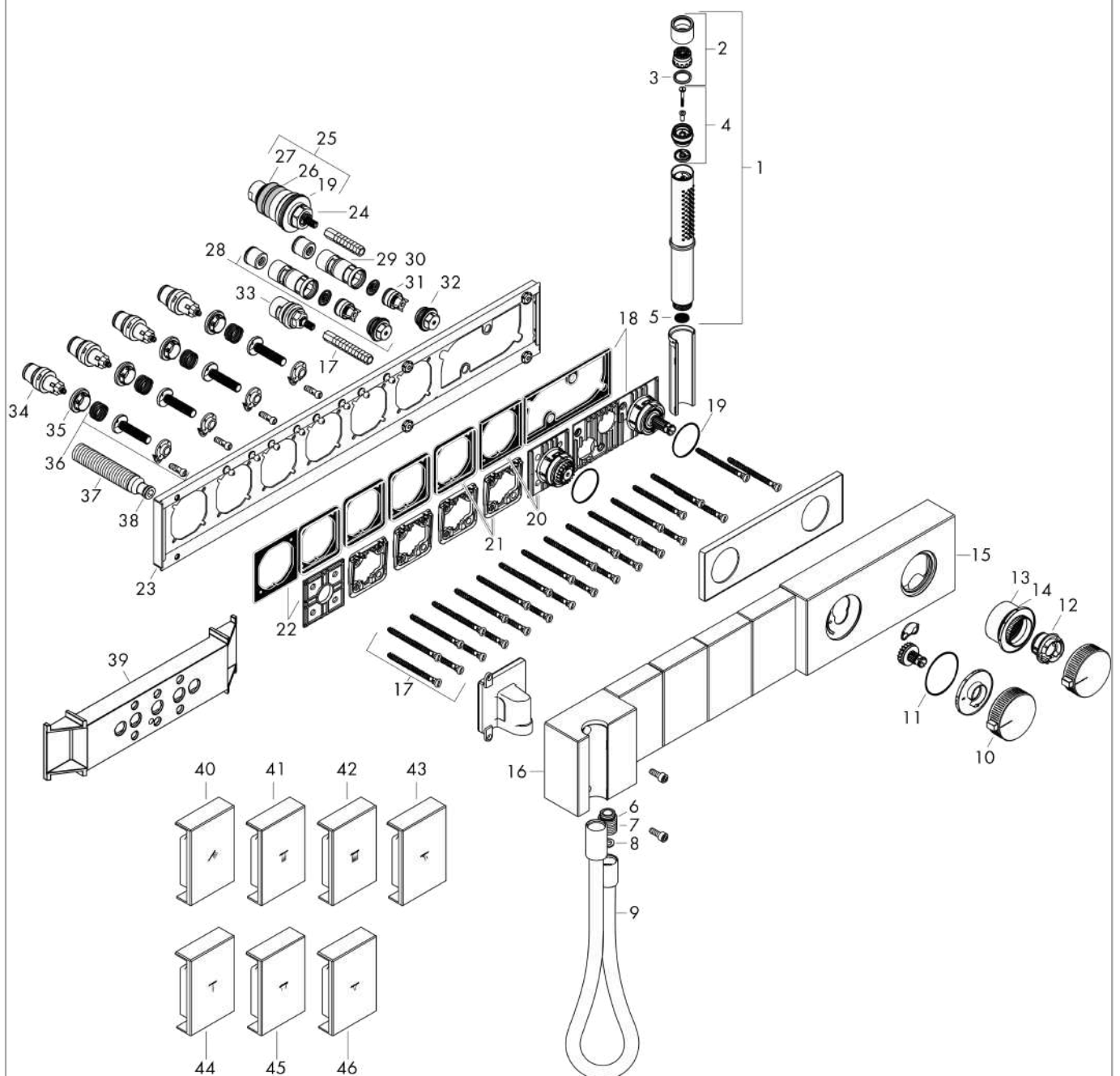
Thermostatic module Select 610/100 for concealed installation for 4 outlets

Surfaces: Art. no. : 46720000



### Exploded Drawing

Year of production: >07/19



## AXOR Edge

Thermostatic module Select 610/100 for concealed installation for 4 outlets

Surfaces: Art. no. : 46720000



### Spare part list

Year of production: >07/19

Pos.		Art. no.	Price	PU
1	handshower	95390000	-	1
2	spray former	95411000	-	1
3	O-Ring 14x2,5	98189000	-	1
4	selector assy	95511000	-	1
5	filter packing	94246000	-	1
6	O-ring 14x2	98129000	-	1
7	Hose Connection	96044000	-	1
8	seal	98058000	-	1
9	shower hose 1,25 m	28282000	-	1
10	handle for thermostat	93610000	-	1
11	O-Ring 50x2	98187000	-	1
12	nut	93648000	-	1
13	O-ring 43x1,5	98148000	-	1
14	safety set	93645000	-	1
15	cover	93644000	-	1
16	shower holder, assy	93646000	-	1
17	mounting kit	93102000	-	1
18	adapter for handle	94013000	-	1
19	O-ring 38x2,5	98198000	-	1
20	adapter for handle	93643000	-	1
21	support element	93111000	-	1
22	support element	93642000	-	1
23	escutcheon	93633000	-	1
24	thermostat cartridge	96633000	-	1
25	sealing set	96636000	-	1
26	O-ring 34x2	98383000	-	1
27	O-ring 26x2	98147000	-	1
28	service unit	93406000	-	1
29	O-ring 20x1,5	98197000	-	1
30	filter	97367000	-	1
31	non return valve	96655000	-	1
32	O-ring 20x2	98165000	-	1
33	shut off unit	98536000	-	1
34	shut off unit	95758000	-	1

## AXOR Edge

Thermostatic module Select 610/100 for concealed installation for 4 outlets

Surfaces: Art. no. : 46720000



### Spare part list

Year of production: >07/19

Pos.		Art. no.	Price	PU
35	nut	98368000	-	1
36	Select-adapter	93103000	-	1
37	connecting thread G½	93830000	-	1
38	O-ring 11x2	98127000	-	1
39	fit-up aid	92540000	-	1
40	symbol handshower	93635000	-	1
41	symbol head shower Rain small	93636000	-	1
42	symbol head shower Rain large	93641000	-	1
43	symbol Flood jet	93640000	-	1
44	symbol Mono	93639000	-	1
45	symbol PowderRain inside	93638000	-	1
46	symbol PowderRain outside	93637000	-	1
a	concealed item	18312180	-	1