

## AXOR Edge

### Porter unit with baton hand shower 2jet and shower hose

Surfaces: **Polished Black Chrome** Article Number: **46520330**



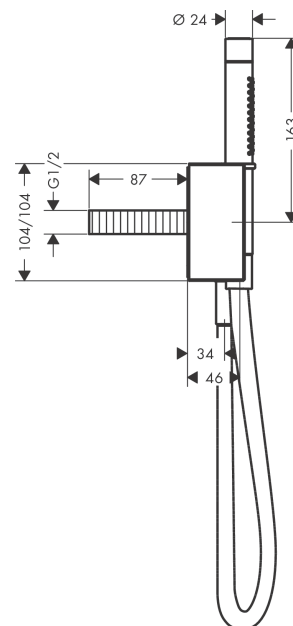
#### product features

- consists of: baton hand shower, porter unit, shower holder, shower hose
- integrated support function
- maximum flow rate at 3 bar: 16,2 l/min
- metal
- non-return valve
- connection type: G ½
- minimum flow pressure: 1 bar
- for shower hoses with cylindrical nut on both sides

#### Product image



#### Scale drawing



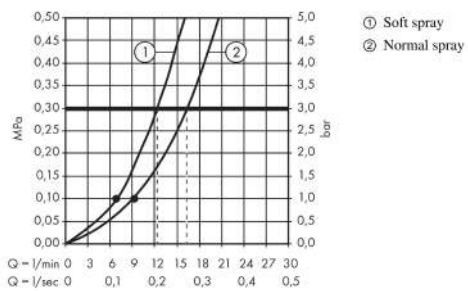
## AXOR Edge

Porter unit with baton hand shower 2jet and shower hose

Surfaces: **Polished Black Chrome** Article Number: **46520330**



### Flowchart



The consumption was measured in combination with the appropriate fittings (thermosta/mixer/ in-wall valve) to reflect actual application in practice.