

AXOR Starck

Single lever manual shower mixer for exposed installation with pin handle

Surfaces: Art. no. : **10611820**



product features

- designed to run 1 function
- Centre distance: 150 mm ± 16 mm
- Maximum flow rate (at 3 bar): 28 l/min
- Flow rate of hand shower (at 3 bar): 16 l/min
- ceramic cartridge
- Maximum temperature can be adjusted on installation
- non-return valve
- hose connection 1/2"
- Connection type: S connections
- Min. operating pressure: 1 bar
- Max. operating pressure: 10 bar
- non thermostatic

Article Details

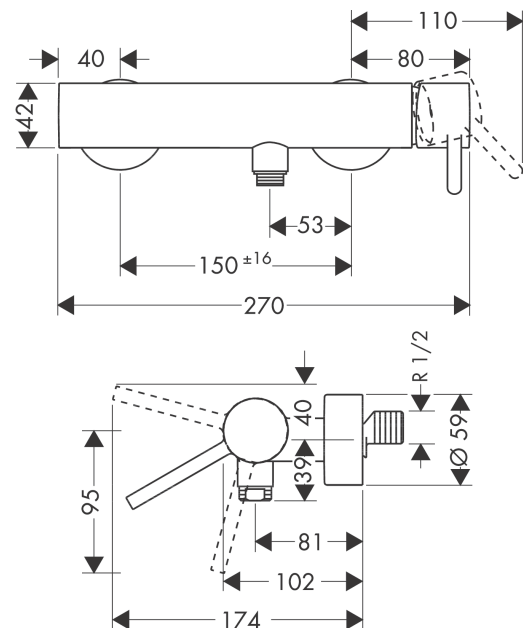
Price excl. VAT

£ 1,062.50

Product image



Scale drawing



AXOR Starck
Single lever manual shower mixer for exposed installation with pin handle
Surfaces: Art. no. : **10611820**



Flowchart

